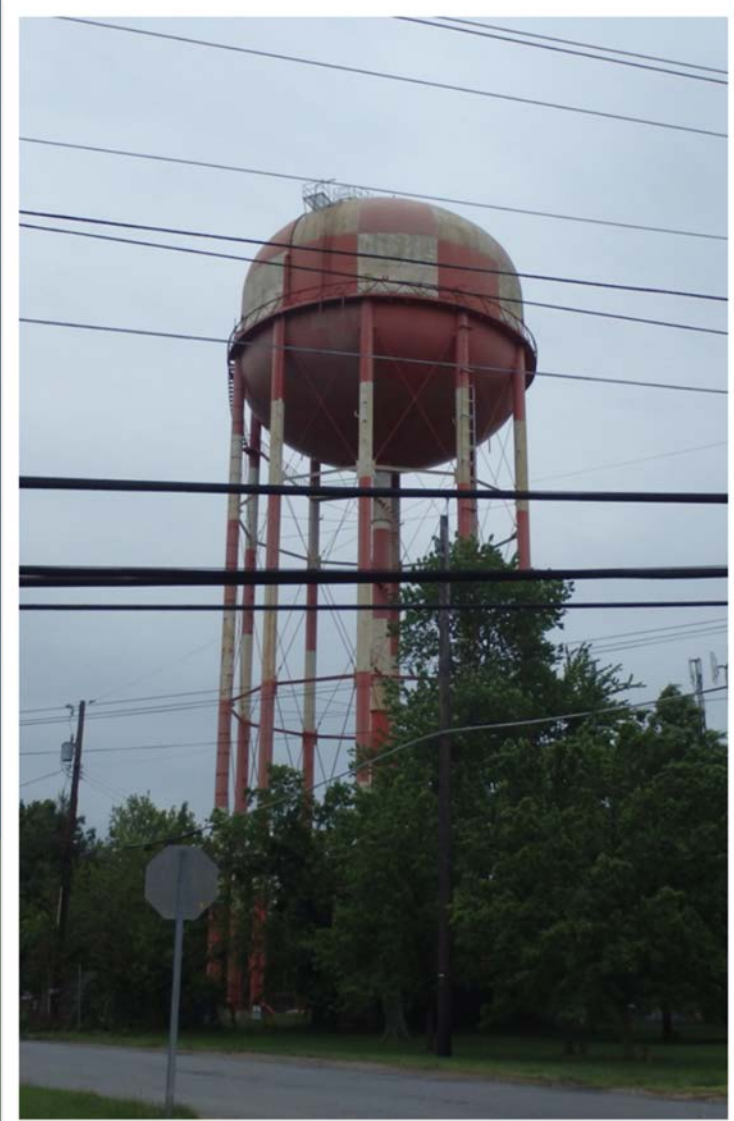


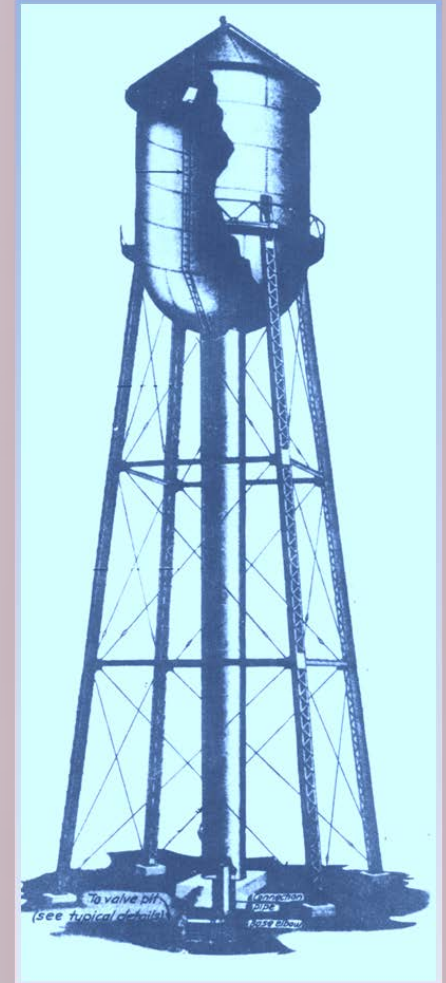


Camp Springs Elevated Water Storage Tank



Purpose of Elevated Water Storage Tanks

- Emergency Service
- Fire Protection
- Helps maintain consistent water pressure system wide to help meet peak demand



Camp Springs Elevated Tank

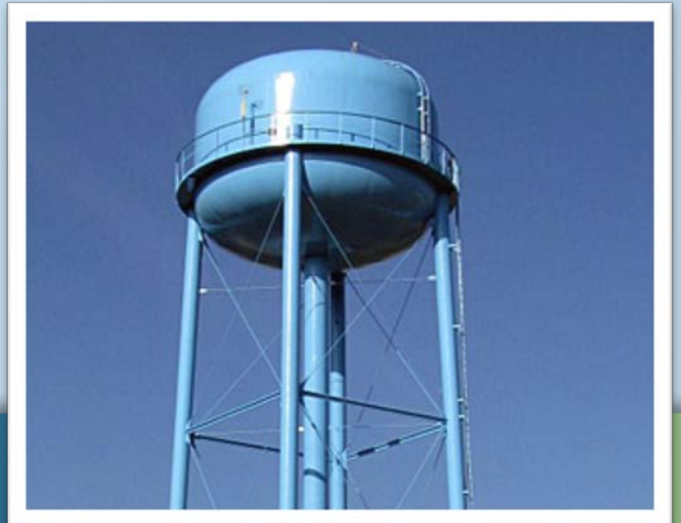
- Located on Kiddiminster Avenue
- 178' tall, 66' wide, 10 column multiple leg design
- Constructed in 1957
- 1-million gallon (MG) storage capacity
- Last Refurbished in 1995



Bottom and columns of the tank.

Project Benefits

- Improve the overall appearance of the tank
- Extension of the life of the water storage facility
- Maintain high water quality
- Improved safety features for WSSC employees
- Increased valve operation reliability



What to Expect

- Anticipated Work Hours
 - Monday-Friday, 7:00 a.m. – 8:30 p.m.
 - Saturday, 8:00 a.m. – 6:30 p.m.
- Sand Blasting to remove old exterior paint from the tank
 - Hours: Monday-Friday, 8:00 a.m.-6:30 p.m.
 - Saturday, 9:00 a.m. – 5:30 p.m.
- Construction noise will adhere with the Prince George's County Regulations
- An inspector contracted by WSSC will be on-site during all work

Work may occasionally extend beyond the working hours to complete specific tasks.

Project Details

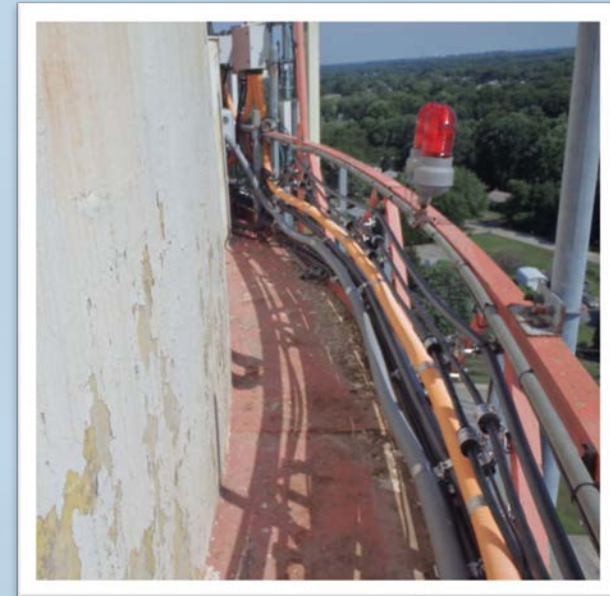
- Tank was fully drained and isolated from the system prior to any work being done

- **Tank and Work Site**

- Upgrade antennae mounting system
- Update electrical, mechanical, and structural hardware
- Install operator safety devices and handrails
- Install internal mixing system
- Replace yard piping, valves, and vault

- **Security**

- Replacing the 6-foot chain link mesh fence and two gates along the front of the tank
- Install tamper proof devices



Tank and Site Improvements

➤ **Painting**

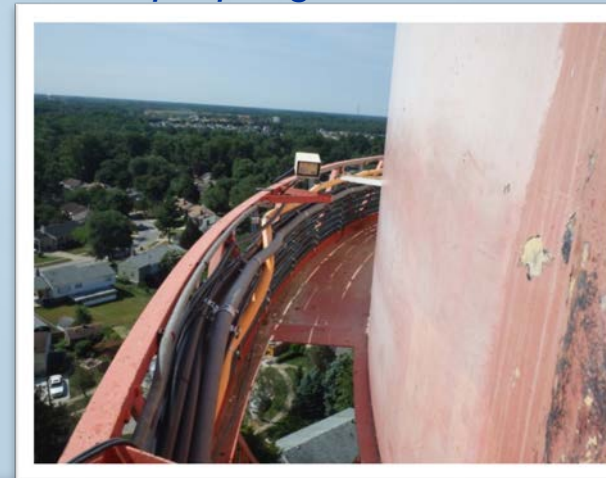
- Repair of deteriorated steel
- Removal of existing lead paint
- Repainting of the tank's interior and exterior
- MSF drinking water approved paint
 - ✓ Zinc Primer
 - ✓ Polyurethane
 - ✓ Epoxy



Deteriorating paint on the Camp Springs Water Tank.

➤ **Once Completed**

- The tank will be disinfected and the water will be tested. Test results reviewed by the Maryland Department of the Environment (MDE) prior to tank going back into service



Environmental and Safety

➤ Lead Safety

- Certified Lead Health Safety Plan (prepared by SE Technologies) in accordance with all regulatory agencies was approved by WSSC and WIT
- All lead waste will be disposed of in sealed drums
- Test soil pre and post construction
- Lead levels test below EPA regulated levels



➤ Signage

- Posting Signs around work area

Environmental and Safety

➤ Sand Blasting

- Use of ambient air monitors to ensure air quality compliance
- State-of-the-art lead abatement system to contain air flow and collect dust
- Blasting will stop immediately if winds are higher than 15 mph



➤ Containment System

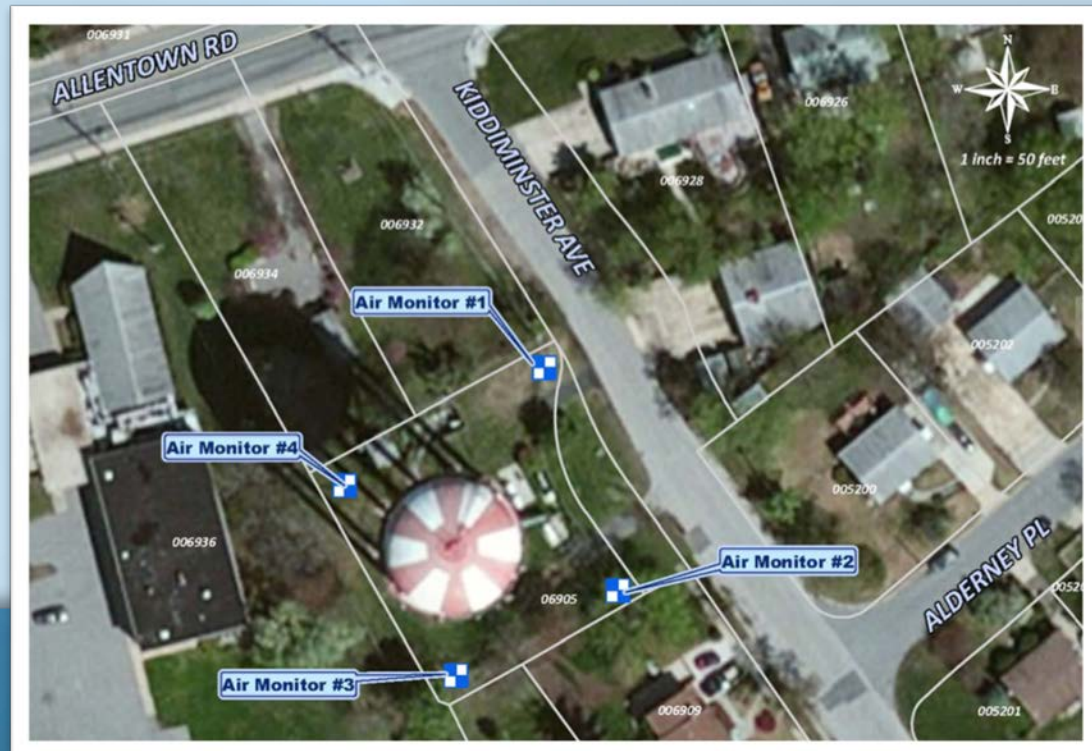
- Full Negative Pressure Containment System (Class 3)
- Roof Bonnet
- An Action Plan has been developed for possible containment breaches
- Dust Collector will run until containment unit is clear



Residential Safety

➤ Air Monitoring

- The Environmental Protection Agency (EPA) and OSHA require initial monitoring at 8, 16 and 24 hours
- 4 Air Monitors located at the four corners of the project site will run through the sand blasting process
- Results will be posted online weekly once sand blasting starts
- Wind sock monitoring



Worker Safety

➤ Worker Safety

- Decontamination Trailer
- Hand Wash Facility
- Personal Air Monitors
- Personal Protective Equipment
- Safety Training
- Lead Blood Testing (Pre and Post)



Project Schedule and Contacts

➤ Project Schedule

- Construction Started September 2016
- Completion Anticipated Fall 2017

➤ WSSC Contacts

- Karen Wright, Systems Control Group Leader
(301) 206-8416, Karen.Wright@wsscwater.com
- John Kasprzak, Project Manager
(301) 206-8554, John.Kasprzak@wsscwater.com
- Production Control Room 24-hour: 301-206-8861

Project Consultants

➤ **D&M Painting Corporation (Contractor)**

- 33 years of experience. Completed hundreds of lead abatement projects
- Excellent Occupational Safety and Health Administration (OSHA) safety record
- D&M utilizes state of the art containment, engineered for each tank
- Maryland Lead Paint Abatement Accreditation through MDE (Maryland Department of the Environment)

Project Consultants

➤ **World International Testing (WIT) Incorporated**

- WSSC has partnered with WIT for more than 15 years to provide on-site inspection for tank rehabilitation projects
- WIT performed the tank inspection and construction documents
- Global leader in Nondestructive Testing
- WIT Employees contributed to writing Lead Abatement Standards