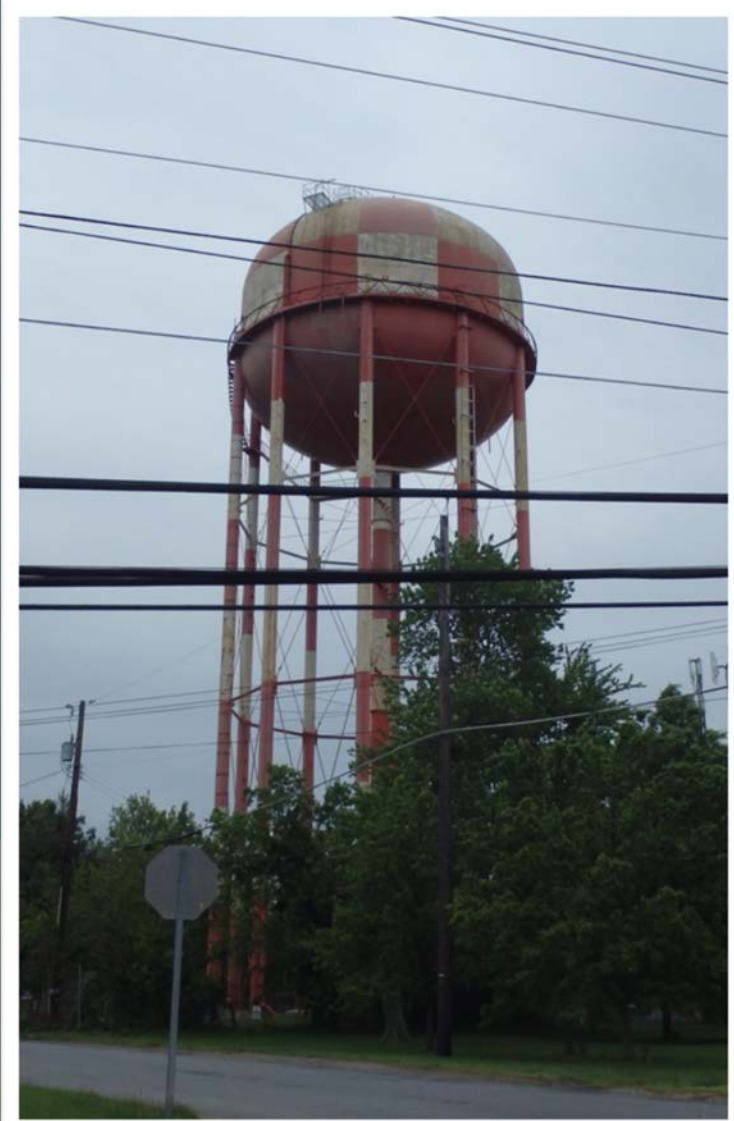


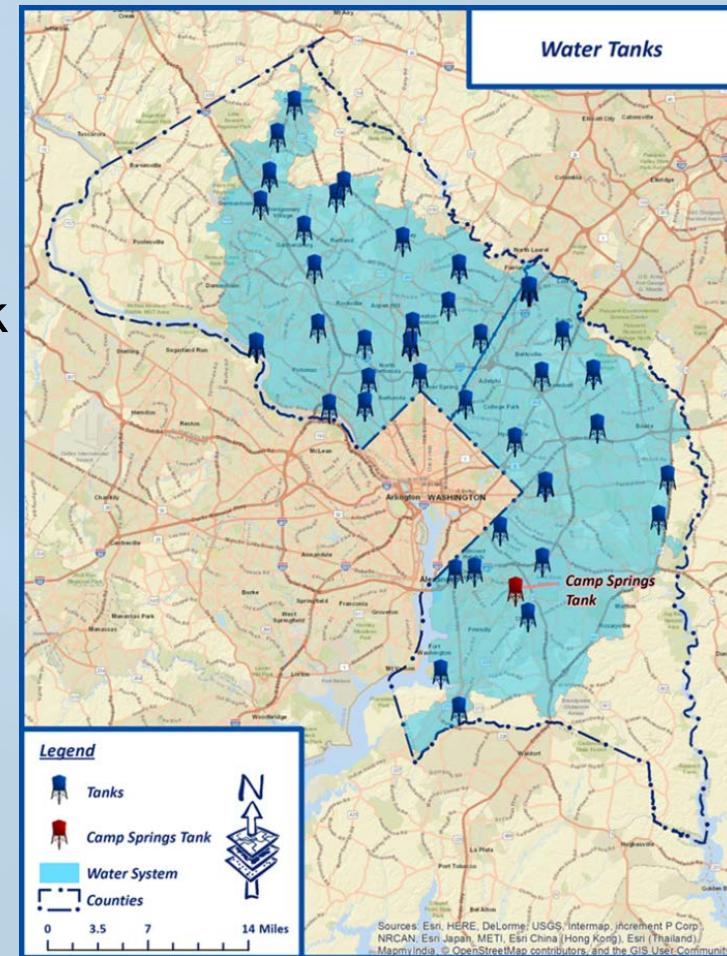


Camp Springs Elevated Water Storage Tank



WSSC Water Storage Facilities Overview

- Maintain and operate 60 water storage facilities
- Maintenance extends life of tank and avoids costly repairs
- Oversee rehabilitation all facilities, including 23 tanks with lead-based paint
- Facilities inspected annually



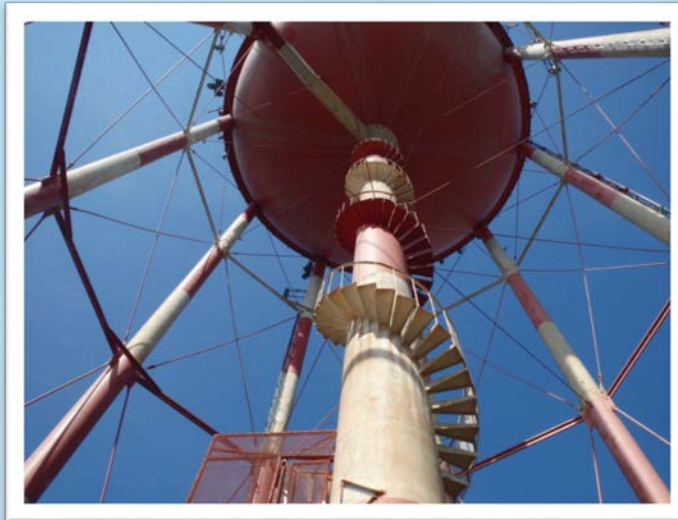
Purpose of Elevated Water Storage Tanks

- Emergency Service
- Fire Protection
- Helps maintain consistent water pressure system wide to help meet peak demand



Camp Springs Elevated Tank

- Located on Kiddiminster Avenue
- 178' tall, 66' wide, 10 column multiple leg design
- Constructed in 1957
- 1-million gallon (MG) storage capacity
- Last Refurbished in 1995



Bottom and columns of the tank.

Project Overview

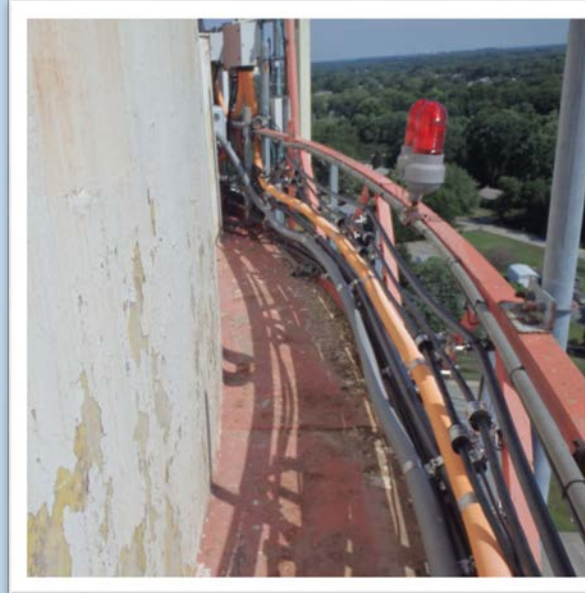
- Started September 2016
- Interior and exterior structural rehabilitation
- Replacing underground pipes, valves and vaults
- Repainting tank exterior



Peeling paint on the side of the tank.

Tank and Site Improvements

- Tank was fully drained and isolated from the system prior to any work being done
- **Tank and Work Site**
 - Upgrade antennae mounting system
 - Update electrical, mechanical, and structural hardware
 - Install operator safety devices and handrails
 - Install internal mixing system
 - Replace yard piping, valves, and vault
- **Security**
 - Replacing the 6-foot chain link mesh fence and two gates along the front of the tank
 - Install tamper proof devices



Tank and Site Improvements

➤ Painting

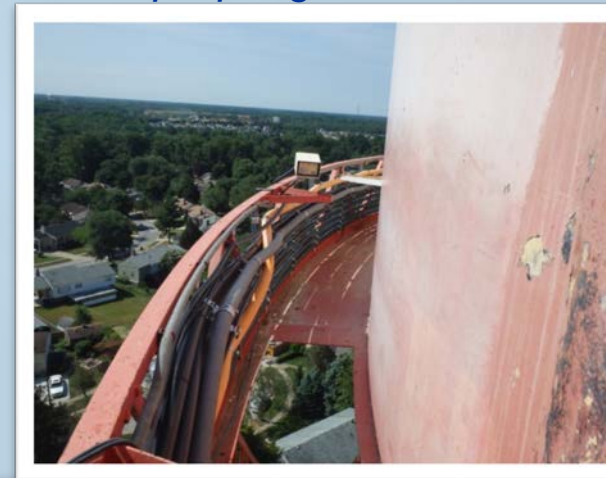
- Repair of deteriorated steel
- Removal of existing lead paint
- Repainting of the tank's interior and exterior



Deteriorating paint on the Camp Springs Water Tank.

➤ Completion

- The tank will be disinfected and the water will be tested. Test results reviewed by the Maryland Department of the Environment (MDE) prior to tank going back into service



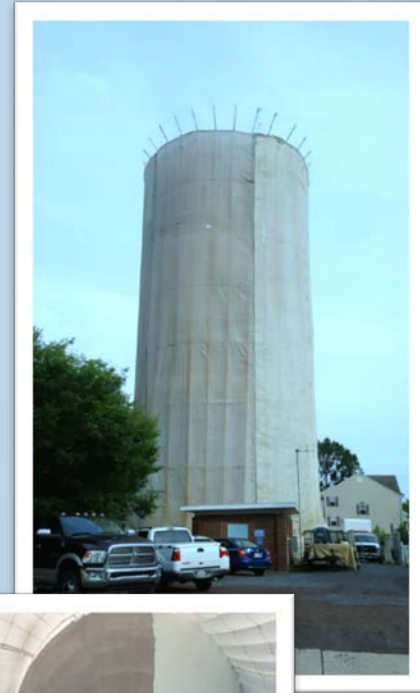
Environmental and Safety

➤ Sand Blasting Safety:

- Use of ambient air monitors to ensure air quality compliance
- State-of-the-art lead abatement system to contain air flow and collect dust

➤ Lead Safety:

- All lead waste will be disposed of in sealed drums
- Test soil pre and post construction
- Lead levels test below EPA regulated levels



Project Consultants

➤ **D&M Painting Corporation (Contractor)**

- 33 years of experience. Completed hundreds of lead abatement projects
- Excellent Occupational Safety and Health Administration (OSHA) safety record
- D&M utilizes state of the art containment, engineered for each tank

➤ **World International Testing (WIT) Incorporated**

- WSSC has partnered with WIT for more than 15 years to provide on-site inspection for tank rehabilitation projects
- WIT performed the tank inspection and construction documents
- Global leader in Nondestructive Testing

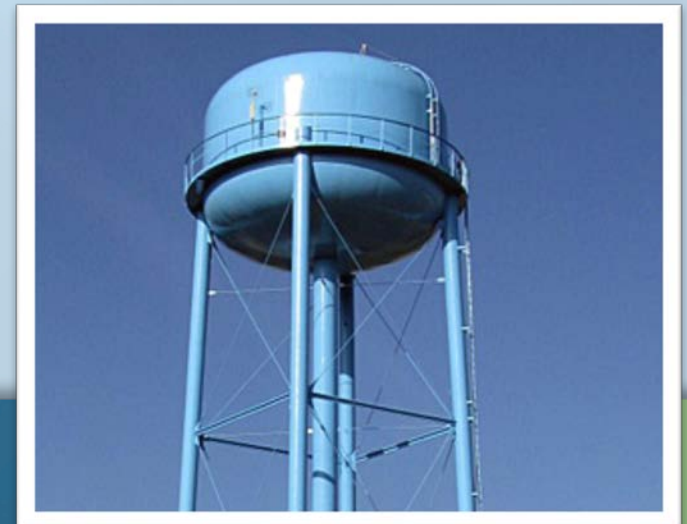
What to Expect

- Anticipated Work Hours
 - Monday-Friday, 7:00 a.m. – 8:30 p.m.
 - Saturday, 8:00 a.m. – 6:30 p.m.
- Sand Blasting to remove old exterior paint from the tank
 - Hours: Monday-Friday, 8:00 a.m.-6:30 p.m.
 - Saturday, 9:00 a.m. – 5:30 p.m.
- Construction noise will adhere with the Prince George's County Regulations
- An inspector contracted by WSSC will be on-site during all work

Work may occasionally extend beyond the working hours to complete specific tasks.

Project Benefits

- Improve the overall appearance of the tank
- Extension of the life of the water storage facility
- Maintain high water quality
- Improved safety features for WSSC employees
- Increased valve operation reliability



Project Schedule and Contacts

➤ Project Schedule

- Construction Started September 2016
- Completion Anticipated Fall 2017

➤ WSSC Contacts

- Karen Wright, Systems Control Group Leader
(301) 206-8416, Karen.Wright@wsscwater.com
- John Kasprzak, Project Manager
(301) 206-8554, John.Kasprzak@wsscwater.com

