

Clarksburg Ten Mile Creek Sewer Study

Clarksburg/Ten-Mile Creek Citizens Advisory
Committee

June 25, 2015

Agenda

1. Confirm Approval of Meeting Summary – April 30, 2015
2. Updates
 1. Update of Pulte Property Proposal
 2. Overview of Revised Alternatives 3 through 7 and New Alternative 8
3. Next Steps/Next Meeting
 1. Summer Hiatus/Break
 2. Possible calendar/timeline
 3. CAC Discussion
4. Open Comments from Public
5. Adjournment

Ground Rules

Citizens Advisory Committee – Meeting Ground Rules

- Only CAC Members and official agency representatives are seated at tables and allowed to participate. All other please sit in the outer chairs.
 - CAC members can send a substitute if they are going to miss a meeting
- Comments/Questions from CAC Members and support staff during meeting. Members of the public will have an opportunity to comment near the end of the meeting
- Please be respectful of each others' opinions/comments. Membership of this CAC represent various and diverse points of views, goals, and perspectives.
- Reminder - WSSC proposed draft sewer infrastructure plan.
 - Plan will be provided to CAC for review and comment. WSSC will complete a final draft plan with documentation of CAC member input and comments in the plan.

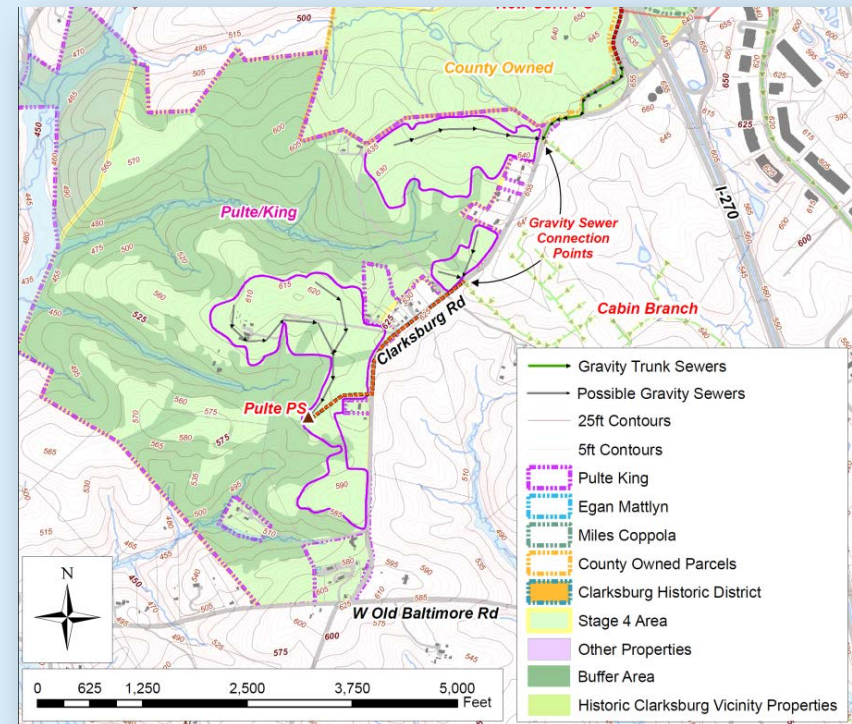
Citizens Advisory Committee Approval of from April 30th Meeting Summary

Pulte/King Property Proposal Update

- Representatives from Pulte met with WSSC in May.
- Communicated to WSSC that they felt the Pulte/King property was being treated differently than the other properties in the LMPA/sewer study area.
- Provided proposal to WSSC showing developable areas (“pods”) of the site based on interpretation of the Limited Master Plan Amendment (LMPA) requirements.
- Pulte proposal in sewer study is present in all updated alternatives **(except alternatives 1 and 2 which are not under consideration in this study).**

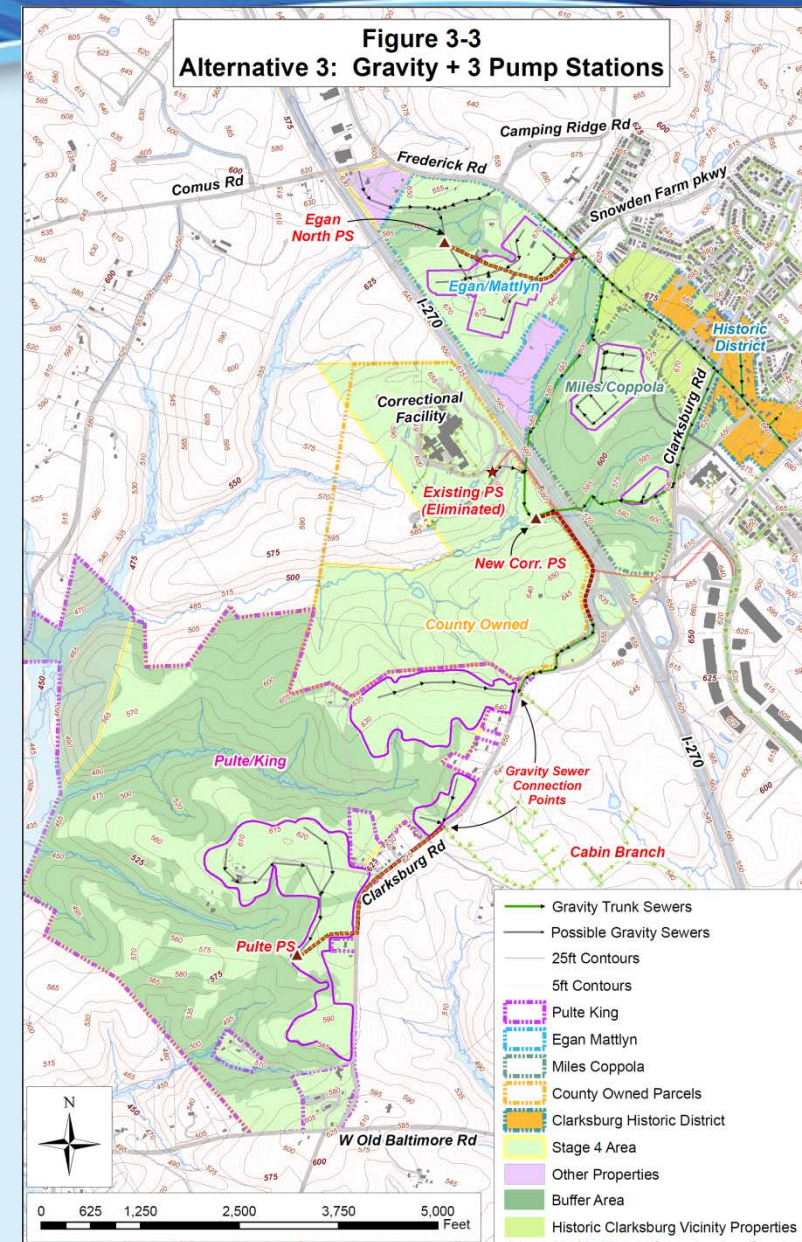
Pulte/King Property

- Sewer serves only the 'pod' areas indicated by sketch provided by Pulte/King representatives.
- Northern-most pod below County-owned parcel and small pod at Clarksburg Road can drain via gravity sewers to the sewers existing or under construction in Cabin Branch Subdivision.
- Pod area in central area will require centralized pump station and force main to Cabin Branch (Note: one possible buffer crossing is within site and subject to design by developer/engineer).
- Southern-most pod can be served by gravity. However may require crossing of buffer area. This area can also likely be served by grinders/low-pressure sewer connecting to southwestern Cabin Branch
- Total Force Main Length – 2,700 feet (much of it in Clarksburg Road)
- Number of Pump Stations (req'd for Pulte/King Property) – 1



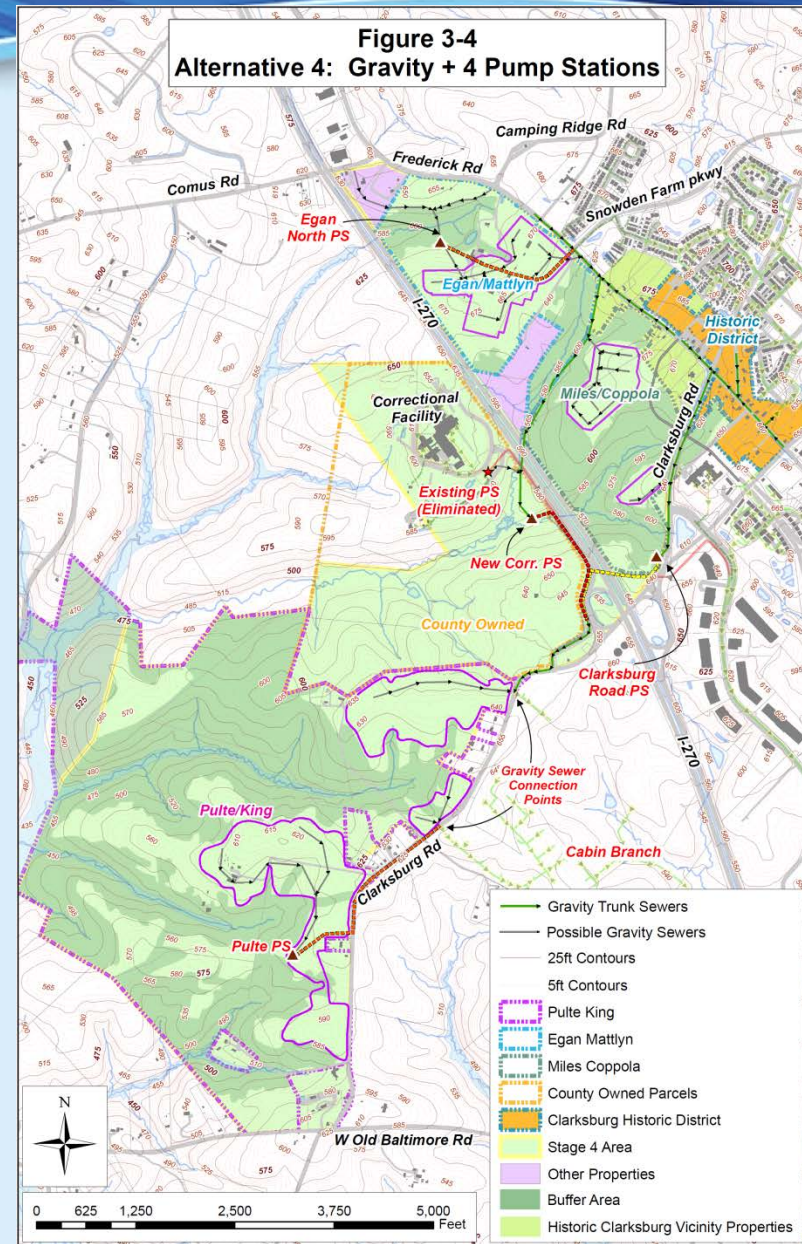
Conceptual Alternative 3

- Egan north PS serves Egan/Mattlyn property and other northern parcels.
- New pump station on County owned property (New Correctional Facility PS)
- Total Gravity Sewer Length – 13,240 feet
- Total Force Main Length – 6,400 feet
- Number of Pump Stations – 3
- New Tunnel Crossings under I-270 – 2



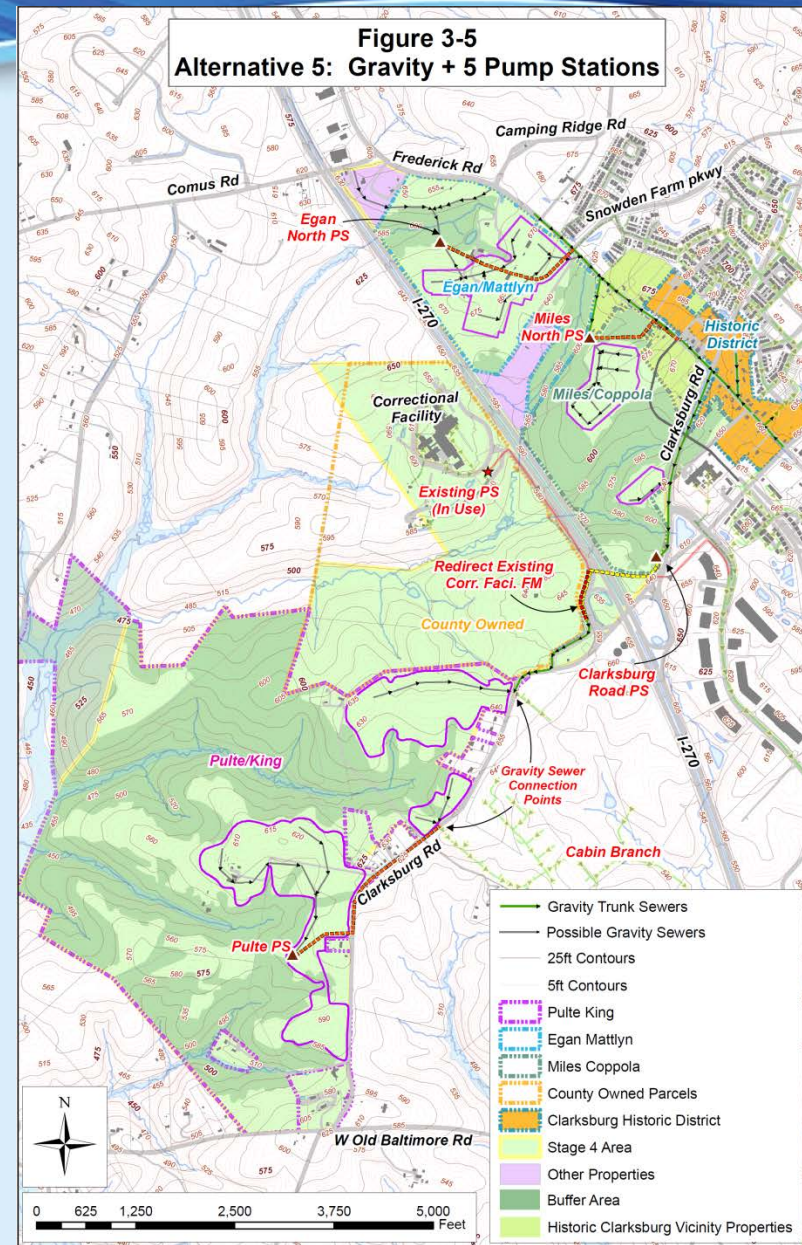
Conceptual Alternative 4

- Adds a new pump station on Clarksburg Road to pump wastewater from Historic District and portion of Miles/Coppola
- Total Gravity Sewer Length – 12,350 feet
- Total Force Main Length – 8,100 feet
- Number of Pump Stations – 4
- New Tunnel Crossings under I-270 – 1



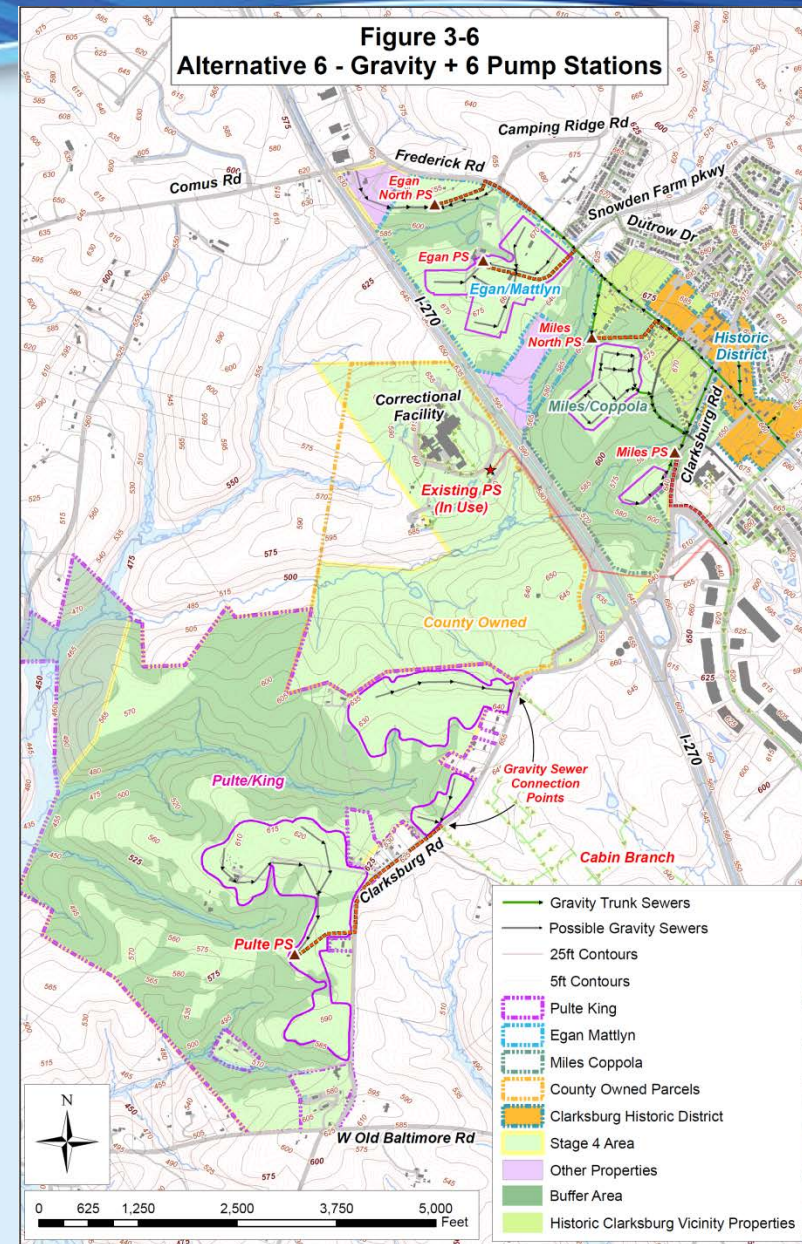
Conceptual Alternative 5

- Adds a new pump station north of Miles/Coppola property
- Existing pump station at Correctional facility remains operational
- Total Gravity Sewer Length – 9,720 feet
- Total Force Main Length – 8,460 feet
- Number of Pump Stations – 5
- New Tunnel Crossings under I-270 – None



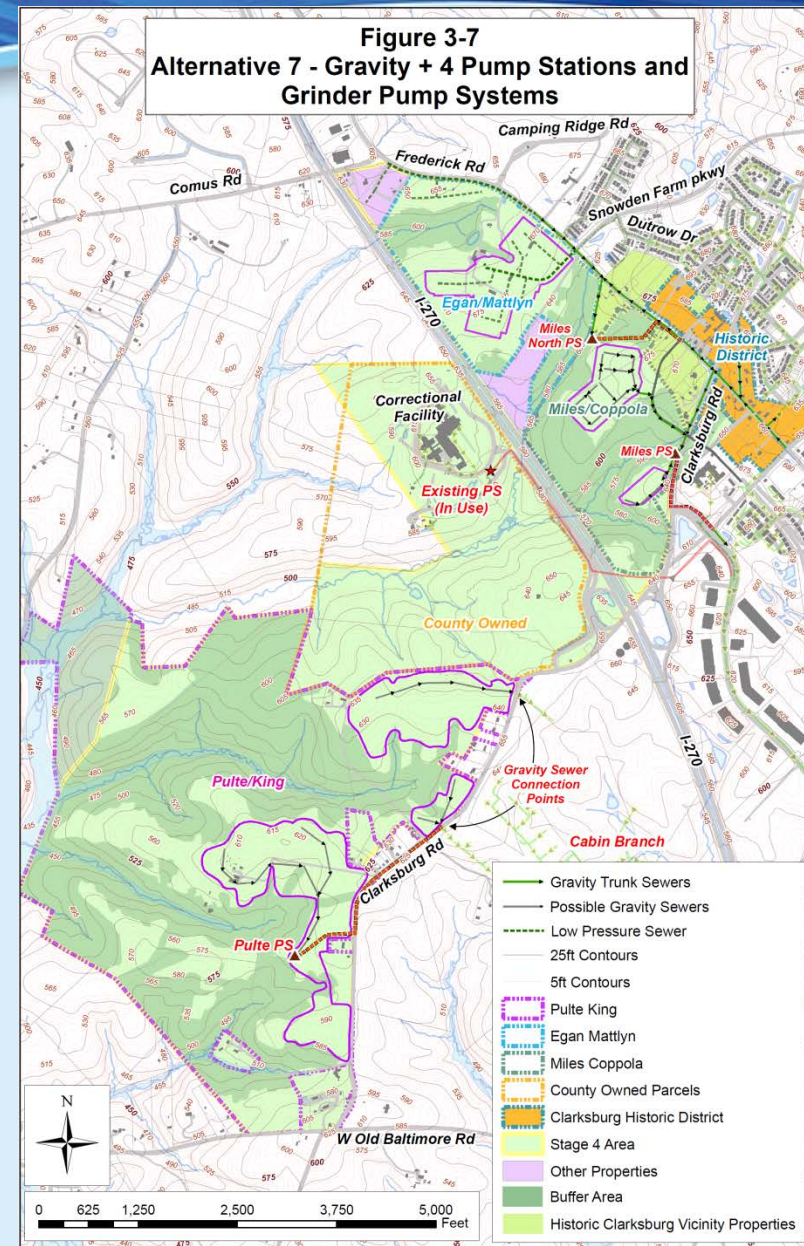
Conceptual Alternative 6

- Adds new proposed Egan Pump Station
- Egan North pump station serves a smaller area and is located on the opposite side of the creek.
- Adds new proposed Miles Pump Station (Replacing Clarksburg Road PS – Alt 4 and 5)
- Total Gravity Sewer Length – 8,410 feet
- Total Force Main Length – 8,500 feet
- Number of Pump Stations – 6
- New Tunnel Crossings under I-270 – None



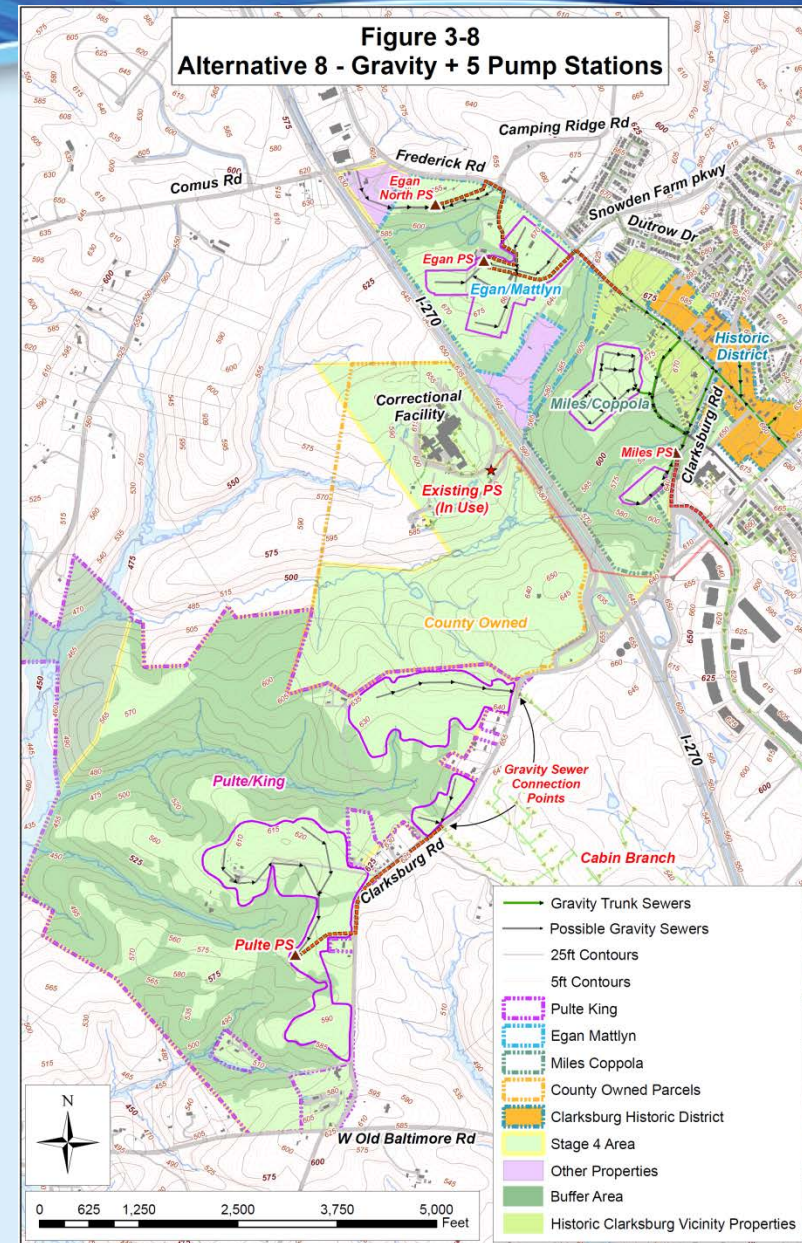
Conceptual Alternative 7

- Eliminates both pump stations on the Egan/Mattlyn property (from Alt 6)
- Egan/Mattlyn and other northern parcels served by low pressure sewer (Grinder pump system)
- Total Gravity Sewer Length – 8,410 feet
- Total Force Main Length – 5,550 feet
- Low Pressure Sewer (main stem only) – 2,600 feet
- Number of Pump Stations – 4
- New Tunnel Crossings under I-270 – None
- Alternative 7 offers fewer overall number of pump stations since Egan and parcels north of Egan are served by low pressure sewers and not by pump stations

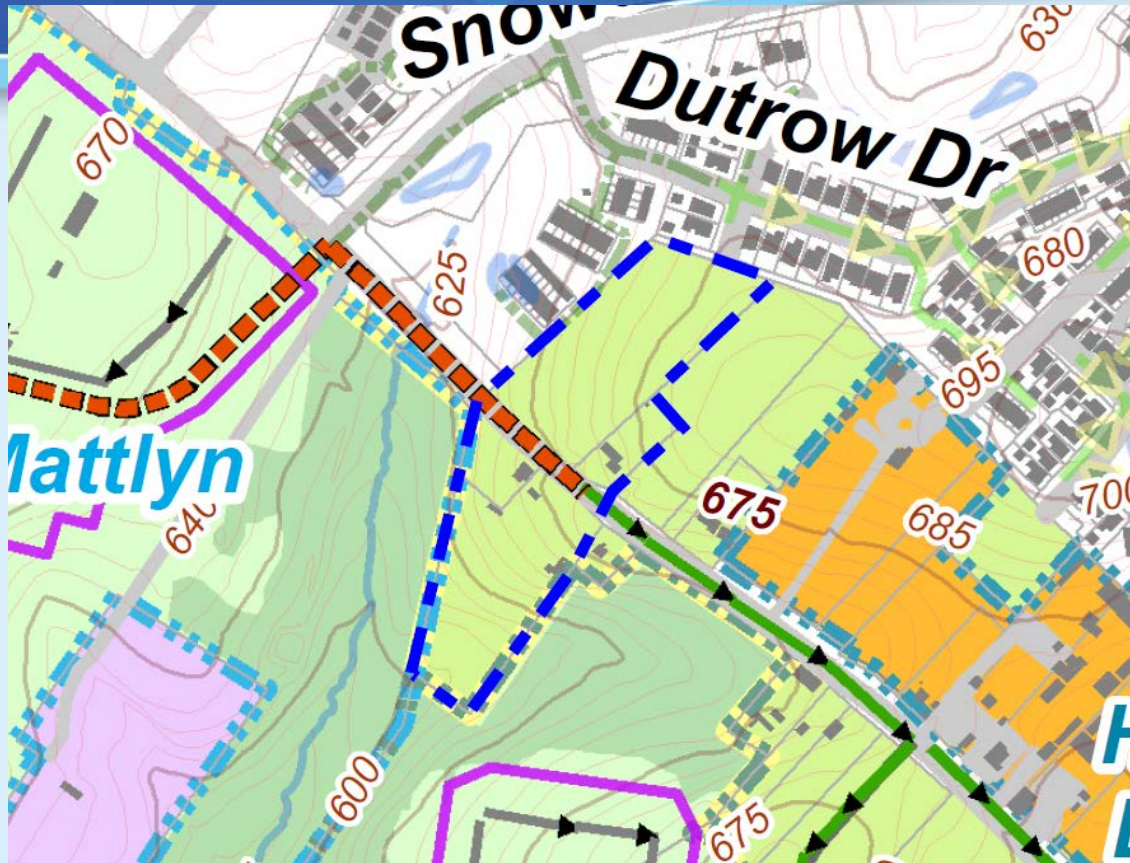


Conceptual Alternative 8

- Eliminates Miles North PS and its upstream gravity sewers (from Alt 6)
- Adds Deep gravity sewers along Frederick Rd and Observation Drive
- Egan North PS pumps to Egan Proposed PS.
- Egan Proposed PS pumps to the deep gravity sewers on Frederick Rd.
- Total Gravity Sewer Length – 5,170 feet
- Total Force Main Length – 8,550 feet
- Deep Gravity Sewer – 1,750 feet
- Number of Pump Stations – 5
- New Tunnel Crossings under I-270 – None
- Alternative 8 involves fewer cascading of pumps. However, a few parcels north of Historic district are left out.



Conceptual Alternative 8 – “Orphaned” parcels

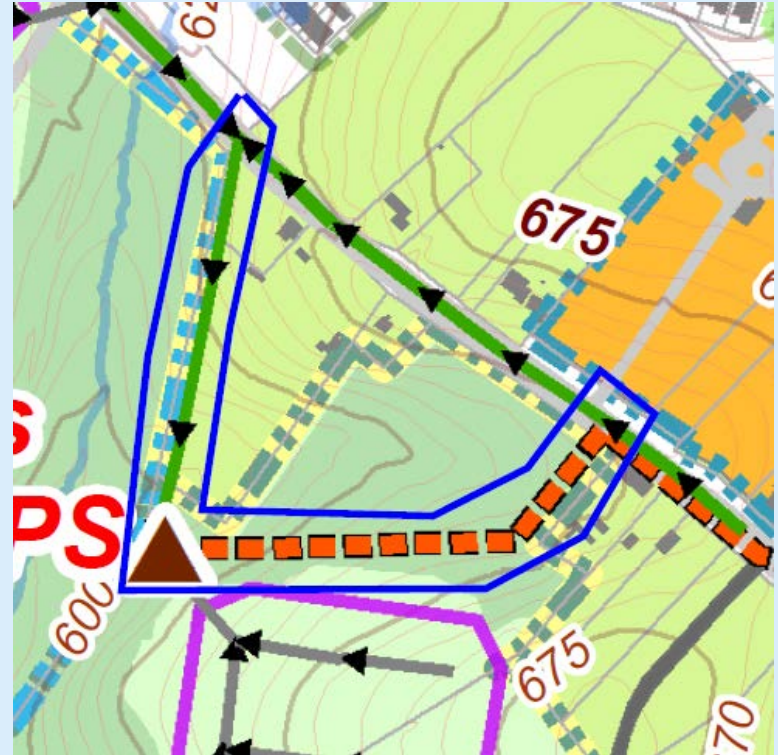


- Properties (outlined in blue) may be orphaned due to elimination of the Miles North PS and the implementation of deep gravity sewer along Frederick Road and the new alignment for Observation Drive. The parcels southwest of Frederick Road are zoned R-90 and the parcels northwest of Frederick Road are zoned CRT.

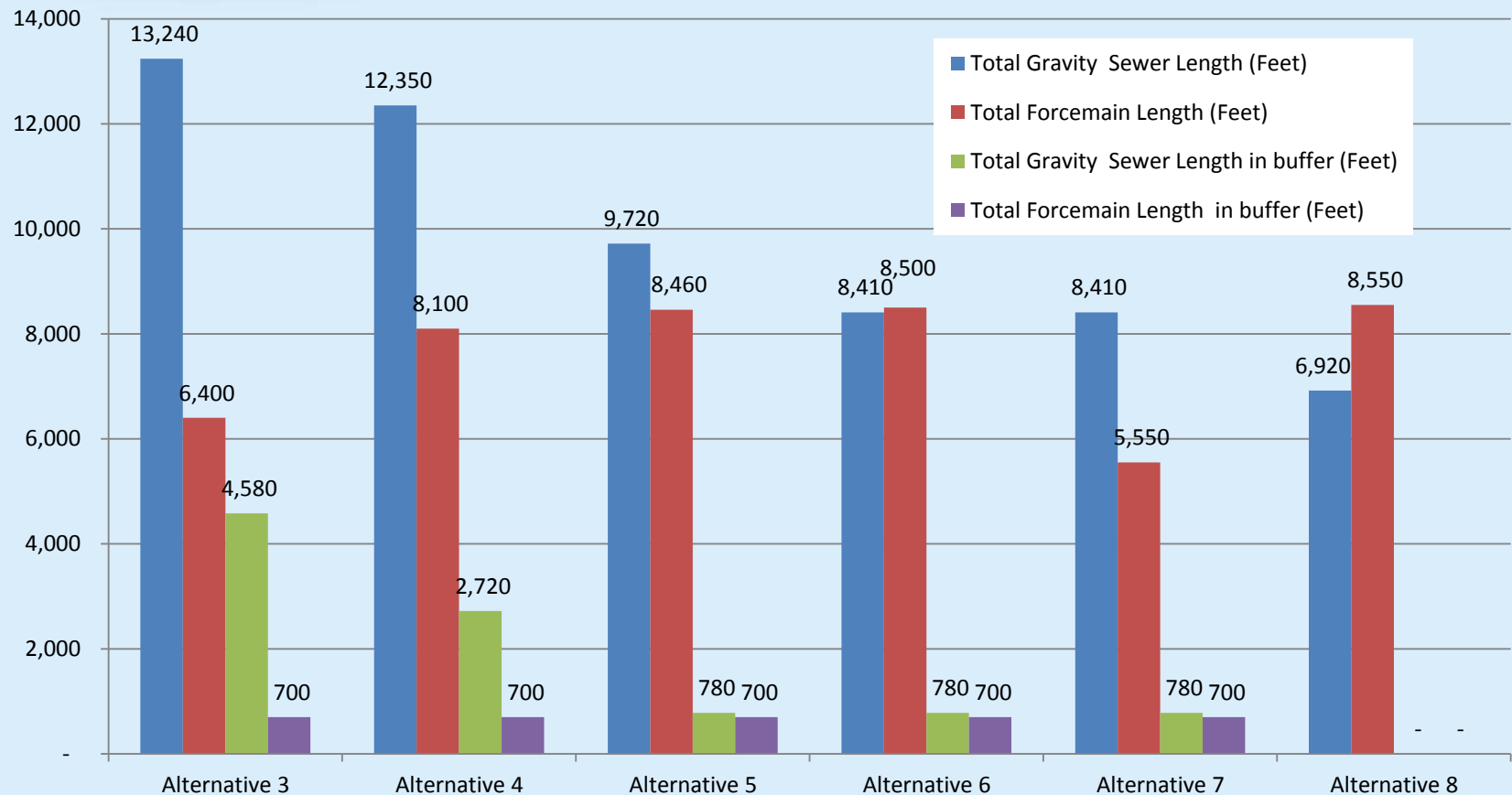
Summary – Sewer Lengths in Buffer

The 700+ feet of gravity and force main in buffer are the sewer stretches leading up to and from Miles North Pump Station

Only sewer and force main remaining in buffer for Alternatives 5, 6 and 7



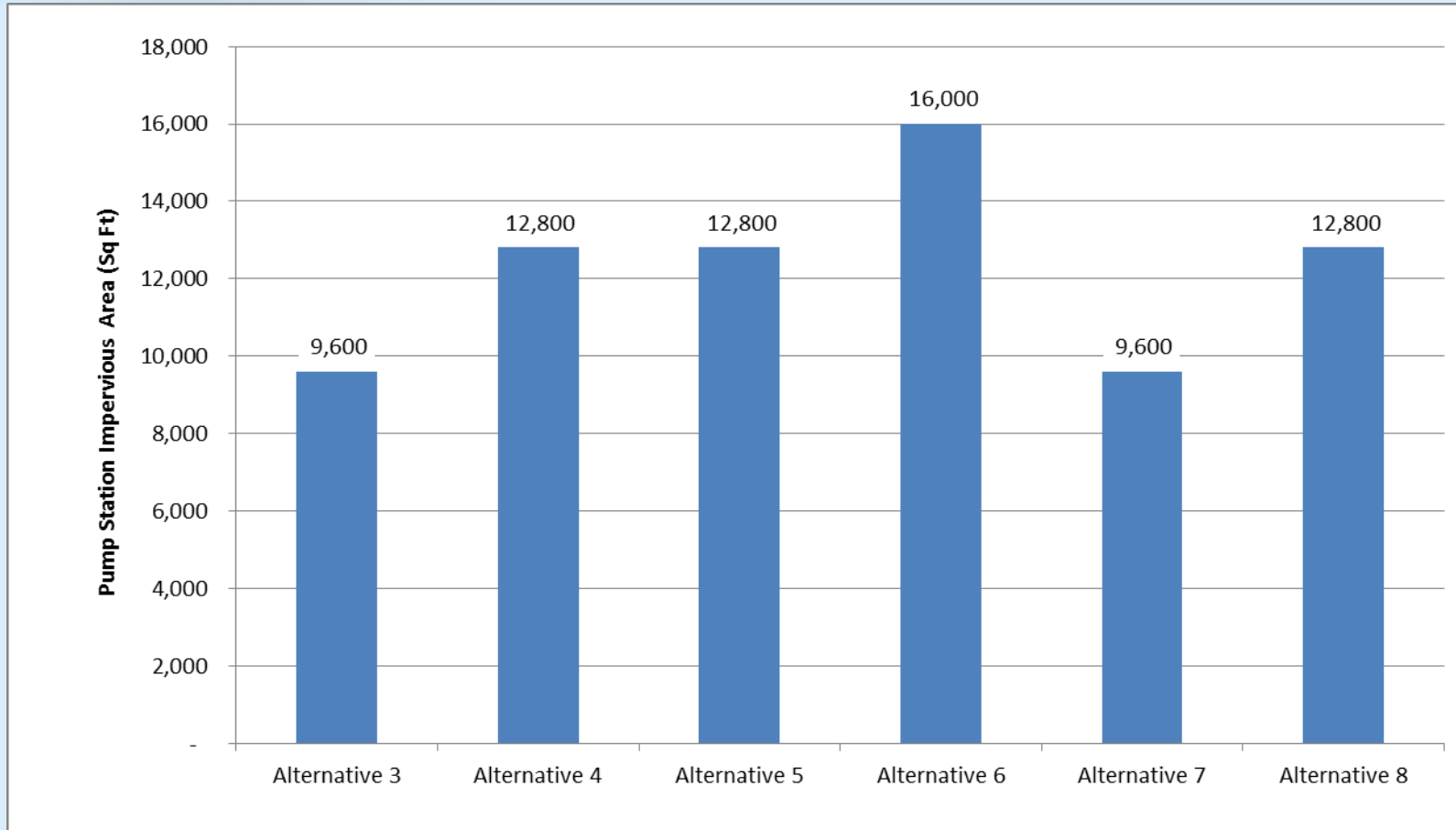
Summary – Sewer Lengths



Summary – Pump Station

Alternative	Description	Pulte PS	Egan North PS	Egan PS (Proposed)	New PS at Corr. Facility	Clarksburg Rd PS	Miles North PS	Miles PS (Proposed)	Existing Corr. Facility PS in use	Total Number of Pump stations in service
Alternative 3	Gravity + 3 PS	Yes	Yes	No	Yes	No	No	No	No	3
Alternative 4	Gravity + 4 PS	Yes	Yes	No	Yes	Yes	No	No	No	4
Alternative 5	Gravity + 5 PS	Yes	Yes	No	No	Yes	Yes	No	Yes	5
Alternative 6	Gravity + 6 PS	Yes	Yes	Yes	No	No	Yes	Yes	Yes	6
Alternative 7	Gravity + 4 PS + Grinder Systems	Yes	No	No	No	No	Yes	Yes	Yes	4
Alternative 8	Gravity + 5 PS	Yes	Yes	Yes	No	No	No	Yes	Yes	5

Summary – Impervious Area for Pump Stations



Questions?

WSSC/MCDEP Environmental Review Status and Possible Summer Hiatus

- We would like to honor any vacation or family commitments and conflicts for CAC members during the summer months.
- CAC needs to discuss whether to continue meetings through summer months (July and August) or whether to take break/hiatus and reconvene in September.
- Brief hiatus will allow full review and coordination between WSSC and Montgomery County Department of Environmental Protection for review and evaluation of environmental impacts of the modified alternatives 3 through 7 and new alternative 8. The hiatus will also allow WSSC to address comments from the MCDEP environmental review and comments from tonight's CAC meeting regarding the alternatives presented.

“Possible” Calendar (if CAC decides to go on summer hiatus)

- Reconvene CAC in September (date TBD). Will report out comments received from and responses to CAC, MCDEP Environmental Review, etc., regarding sewer study alternatives 3 through 8. Obtain further CAC input and comments regarding any new changes, modifications, or updates.
- WSSC will modify/update working **draft** report (*cost estimates of the alternatives will be finalized and provided as well*) and present to CAC in October meeting. Obtain CAC, MCDEP, County staff (Parks, Planning Department), input and comments to be addressed in final draft.
- WSSC presents **final** draft report and recommendation to CAC in November meeting.
- Final draft, recommendation, and any final written CAC input submitted on the final draft and WSSC recommendation will subsequently be forwarded by WSSC to the Planning Board and County Council for briefings (as by the CAC procedure).

Open Comments/Discussion from Public

Ten Mile Creek Sewer Study Web Page at WSSC Web Site

- As a reminder, all meeting material (agenda, presentation, maps, correspondence, meeting summary) will be posted to the Ten Mile Creek Sewer Study web page at the WSSC's web site.

<https://www.wsscwater.com/business--construction/major-projects/ten-mile-creek--clarksburg-sewer.html>

Thank you for attendance. Have a safe and great evening.

We appreciate your support, participation and cooperation.