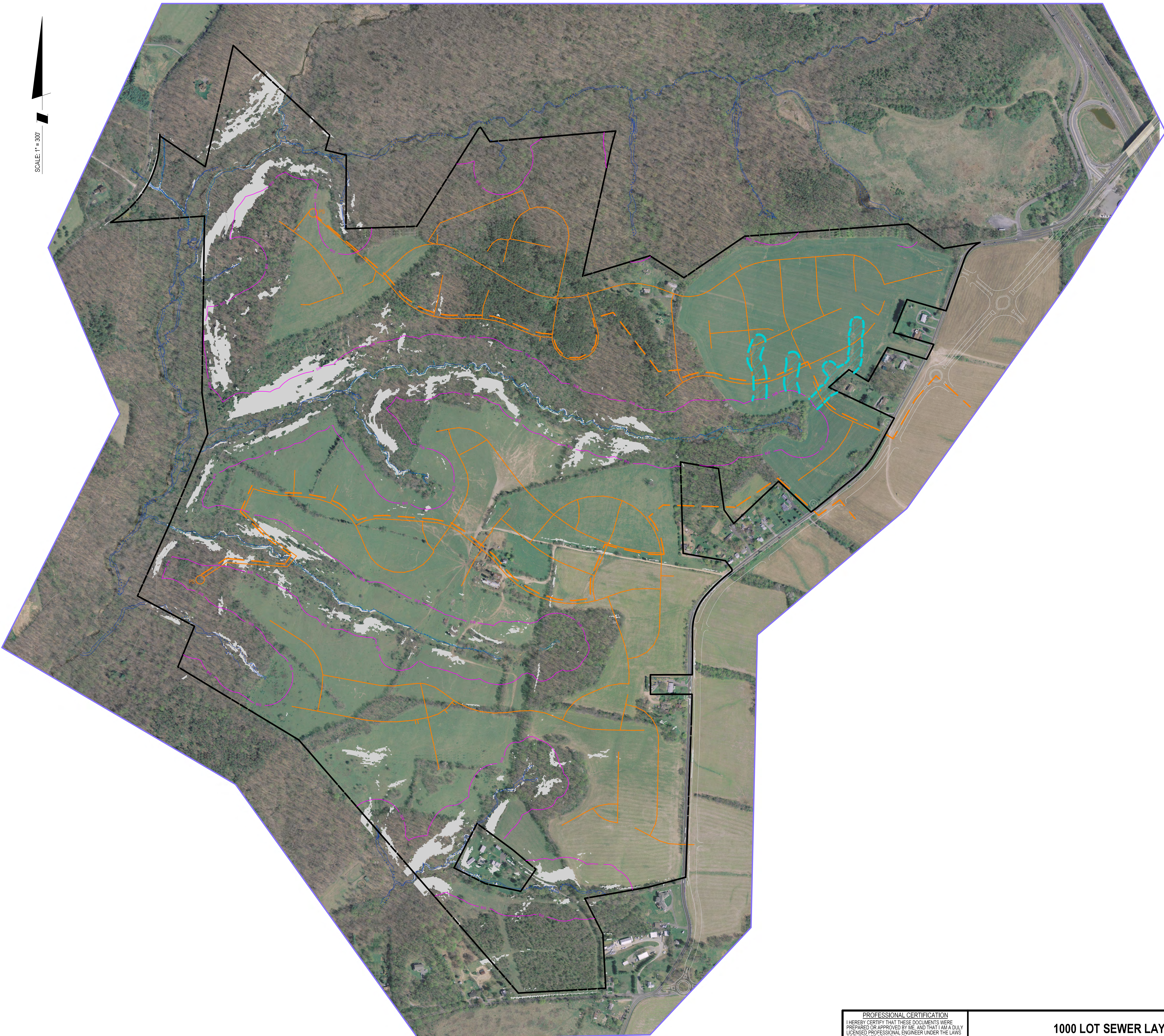


The original of this drawing document was prepared by Soltesz, Inc. (SOLTESZ). This document was not obtained directly from SOLTESZ and/or it was transmitted electronically. SOLTESZ cannot guarantee that unauthorized changes and/or alterations were not made by others. If verification of the information contained herein is needed, contact should be made directly with SOLTESZ. SOLTESZ makes no warranties, express or implied, concerning the accuracy of any information that has been transmitted by electronic means.



LEGEND

- BOUNDARY ———
- PROPOSED SEWER ———
- PROPOSED FORCEMAIN - - - - -
- PUMP STATION ○ PS
- STREAM VALLEY BUFFER ———
- EPHEMERAL CHANNEL ———
- PERENNIAL STREAM ———
- INTERMITTENT PERENNIAL STREAM ———
- EPHEMERAL STREAM BUFFER ▨▨▨▨▨▨▨▨▨▨
- ALLOWED LIMIT OF DISTURBANCE ▭
- STEEP SLOPES (25%) ▭

PROFESSIONAL CERTIFICATION
 I HEREBY CERTIFY THAT THESE DOCUMENTS WERE PREPARED OR APPROVED BY ME, AND THAT I AM A DULY LICENSED PROFESSIONAL ENGINEER UNDER THE LAWS OF THE STATE OF MARYLAND.
 LICENSE NO. _____ EXPIRATION DATE: _____

1000 LOT SEWER LAYOUT EXHIBIT

TEN MILE CREEK

CLARKSBURG (2nd) ELECTION DISTRICT, MONTGOMERY COUNTY, MARYLAND



SHEET	1
OF	1
PROJECT NO.	0008-74-03

SOLTESZ
 Engineering
 Surveying
 Planning
 Environmental Sciences

Rockville Office
 2 Research Place, Suite 100
 Rockville, MD 20850
 P. 301.948.2750 F. 301.948.9067
 www.solteszco.com

NO.	DATE	DESIGNED BY	DATE	REVISIONS	BY	DATE

MISS UTILITY NOTE
 INFORMATION CONCERNING EXISTING UNDERGROUND UTILITIES WAS OBTAINED FROM AVAILABLE RECORDS. THE CONTRACTOR MUST DETERMINE THE EXACT LOCATION AND ELEVATION OF ALL EXISTING UTILITIES AND UTILITY CROSSINGS BY EXCAVATING TEST PITS BY HAND, WELL IN ADVANCE OF THE START OF EXCAVATION. CONTACT "MISS UTILITY" AT 1-800-377-48 HOURS PRIOR TO THE START OF EXCAVATION. IF CLEARANCES ARE LESS THAN SHOWN ON THIS PLAN OR TWELVE (12) INCHES, WHOEVER IS LESS, CONTACT THE ENGINEER AND THE UTILITY COMPANY BEFORE PROCEEDING WITH CONSTRUCTION. CLEARANCES LESS THAN NOTED MAY REQUIRE REVISIONS TO THIS PLAN.

OWNER/DEVELOPER/APPLICANT
 PULTE GROUP
 10900 ARROWHEAD DRIVE
 SUITE 225
 FAIRFAX, VA 22030

MAP	8	GRID	JB
TAX MAP		ZONING CATEGORY	
WSEC 200' SHEET		XXXX	
	231 NW 14		
SITE DATUM		XXXX	
HORIZONTAL			
VERTICAL			