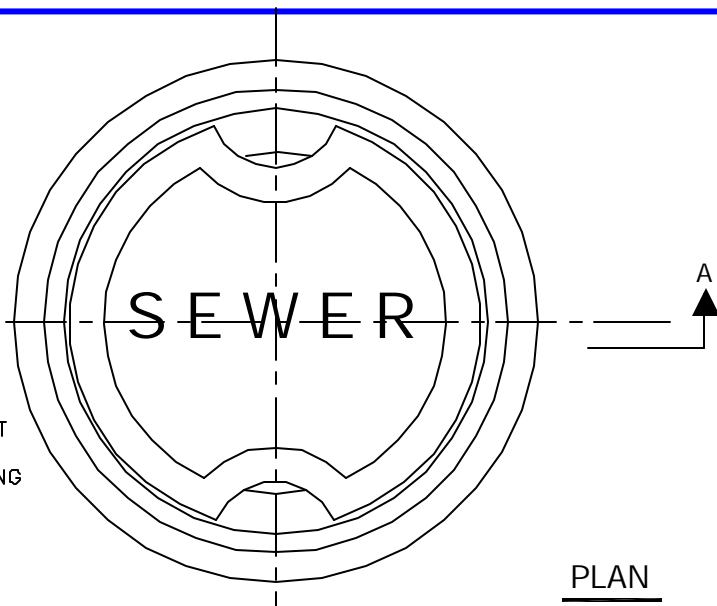


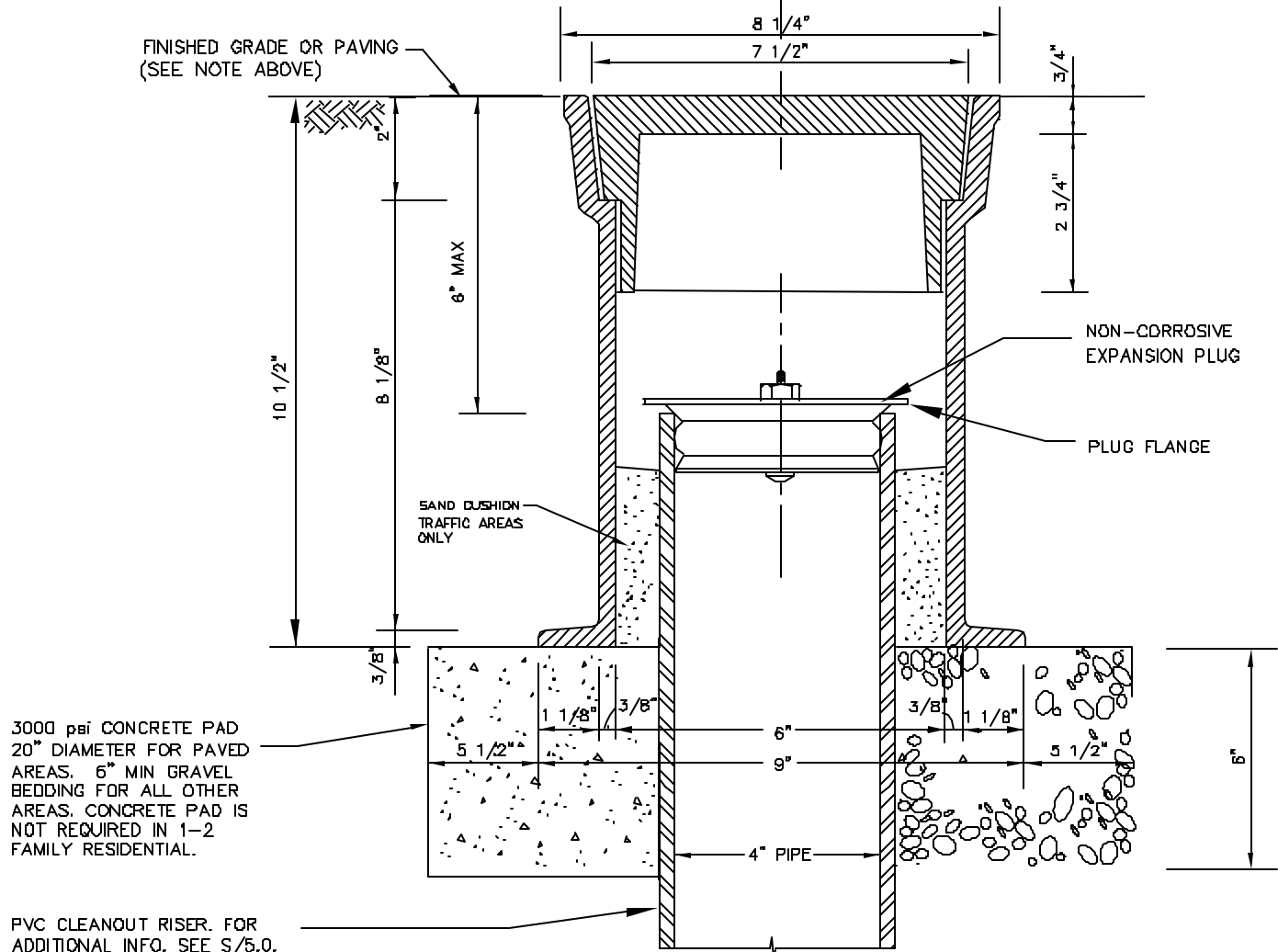
NOTE: IN VEHICULAR TRAFFIC AREAS NOT PAVED, PROVIDE 2'x2'x10 1/2"(H) SQUARE CONCRETE ENCASEMENT ( $f_c=3000$  PSI @ 28 DAYS) AROUND THE FRAME.

**EXPANSION PLUG NOTES:**

1. EXPANSION PLUG SHALL NOT INTERFERE WITH LID.
2. PLUG FLANGE SHALL BE LARGER THAN PIPE I.D.
3. NON-CORROSIVE EXPANSION PLUG SHALL CONSIST OF PLASTIC BODY WITH A SOFT PVC OR RUBBER SEALING GASKET AND 3/8"-INCH HEX-HEAD TIGHTENING NUT, WITH THREADED COMPONENTS FLATTENED OR STAKED TO PREVENT DISASSEMBLY. PLUG SHALL BE "GRIPPER" EXPANSION PLUG MANUFACTURED BY CHERNE INDUSTRIES OR REAL-TITE EXPANSION PLUG MANUFACTURED BY REAL-TITE PLUGS, INC.



**PLAN**



**SECTION A-A**

3000 psi CONCRETE PAD 20" DIAMETER FOR PAVED AREAS. 6" MIN GRAVEL BEDDING FOR ALL OTHER AREAS. CONCRETE PAD IS NOT REQUIRED IN 1-2 FAMILY RESIDENTIAL.

PVC CLEANOUT RISER. FOR ADDITIONAL INFO. SEE S/5.0.

<p>WASHINGTON SUBURBAN SANITARY COMMISSION</p>	<p>APPROVED: SEP 12 2002</p> <p><i>Rafael Rodriguez</i> Chief Engineer</p>	<p>STANDARD DETAIL</p> <p>CLEANOUT COVER ASSEMBLY FOR 4" CLEANOUTS</p>	<p>S 5.1</p>
--	--	--	------------------