

Study Results, Observations, and Recommendations



Photo 5-1: Tucker Lane fallen trees

Study Results, Observations, and Recommendations



Photo 5-2: Tucker Lane hole in trail

Study Results, Observations, and Recommendations



Photo 5-3: Ednor Lane slope and channelized erosion

Study Results, Observations, and Recommendations

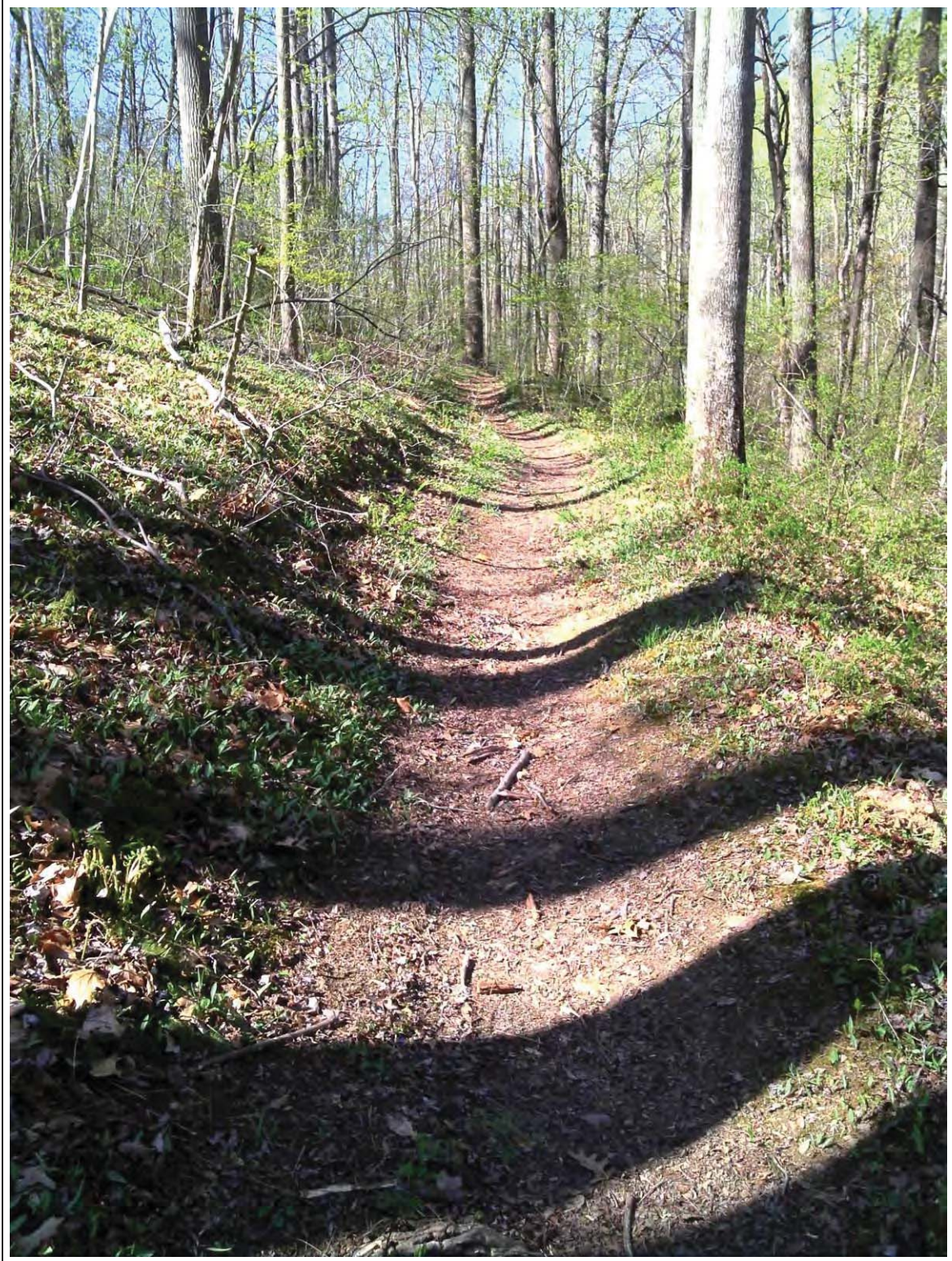


Photo 5-4: Ednor Lane slope and channelized erosion

Study Results, Observations, and Recommendations



Photo 5-5: Supplee Lane Recreation Area fishing equipment packaging found along the trail

Study Results, Observations, and Recommendations



Photo 5-6: Supplee Lane Recreation Area unauthorized shoreline trail with substantial bank erosion

Study Results, Observations, and Recommendations



Photo 5-7: Brown's Bridge Recreation Area - North Bank motorcycle tracks caused rutting on the fairly steep slope

Study Results, Observations, and Recommendations



Photo 5-8: Brown's Bridge Recreation Area - North Bank exposed roots

Study Results, Observations, and Recommendations



Photo 5-9: Brown's Bridge Recreation Area - North Bank shoreline collapsed area of red soil

Study Results, Observations, and Recommendations



Photo 5-10: Brown's Bridge Recreation Area - North Bank overflowing trashcan

Study Results, Observations, and Recommendations



Photo 5-11: Scotts Cove West Shoreline Trail trash on trail

Study Results, Observations, and Recommendations



Photo 5-12: Scotts Cove West Shoreline Trail manure on trail

Study Results, Observations, and Recommendations



Photo 5-13: Scotts Cove West Utility Trail erosion

Study Results, Observations, and Recommendations



Photo 5-14: Terry Ledley Equestrian Trail sign.

Study Results, Observations, and Recommendations



Photo 5-15: Terry Ledley Equestrian Trail stream crossing.

Study Results, Observations, and Recommendations



Photo 5-16: Terry Ledley Equestrian Trail reservoir from closest trail point.

Study Results, Observations, and Recommendations



Photo 5-17: Pat Oliva Trail close to water at the Olivia Pass

Study Results, Observations, and Recommendations



Photo 5-18: Pat Oliva Trail

Study Results, Observations, and Recommendations



Photo 5-19: Pat Oliva Trail section eroded due to poor trail alignment

Study Results, Observations, and Recommendations



Photo 5-20: Pat Oliva Trail channelized erosion

Study Results, Observations, and Recommendations



Photo 5-21: Pat Oliva Trail channelized erosion

Study Results, Observations, and Recommendations



Photo 5-22: Pat Oliva Trail stream crossing

Study Results, Observations, and Recommendations



Photo 5-23: Pat Oliva Trail horse tracks and disturbed soil

Study Results, Observations, and Recommendations



Photo 5-24: Washout area within Section 5 of the Access Road

Study Results, Observations, and Recommendations



Photo 5-25: Washout area within Section 5 of the Access Road

Study Results, Observations, and Recommendations



Photo 5-26: Washout area within Section 5 of the Access Road

Study Results, Observations, and Recommendations



Photo 5-27: Section 6 steep hill with deep erosion/gully.

Study Results, Observations, and Recommendations



Photo 5-28: Harding Road Section with heavy vegetation

Study Results, Observations, and Recommendations



Photo 5-29: Route 29 to Brown's Bridge North Section erosion

Study Results, Observations, and Recommendations



Photo 5-30: Brown's Bridge North to Fox Haven Section trail

Study Results, Observations, and Recommendations



Photo 5-31: Brown's Bridge North to Fox Haven Section rutting

Study Results, Observations, and Recommendations



Photo 5-32: Triadelphia Recreational Area Shoreline and Interior Trails trash found along trail

Study Results, Observations, and Recommendations



Photo 5-33: Triadelphia Recreational Area Shoreline and Interior Trails bank erosion

Study Results, Observations, and Recommendations



Photo 5-34: Greenbridge Recreation Area bank erosion

Study Results, Observations, and Recommendations



Photo 5-35: Brighton Dam Recreational Area bank erosion

Study Results, Observations, and Recommendations



Photo 5-36: Big Branch shoreline trail high slope alignment

Study Results, Observations, and Recommendations



Photo 5-37: Pig Tail Recreational Area trail erosion

Study Results, Observations, and Recommendations



Photo 5-38: Triadelphia Lake Road

Study Results, Observations, and Recommendations



Photo 5-39: Triadelphia Lake Road rutting from vehicles

Study Results, Observations, and Recommendations



Photo 5-40: Triadelphia Lake Road area cleared by a small dozer

Study Results, Observations, and Recommendations



Photo 5-41: Greenbridge West Access Rd

Study Results, Observations, and Recommendations



Photo 5-42: Greenbridge West Access Rd significant rutting and erosion

Study Results, Observations, and Recommendations

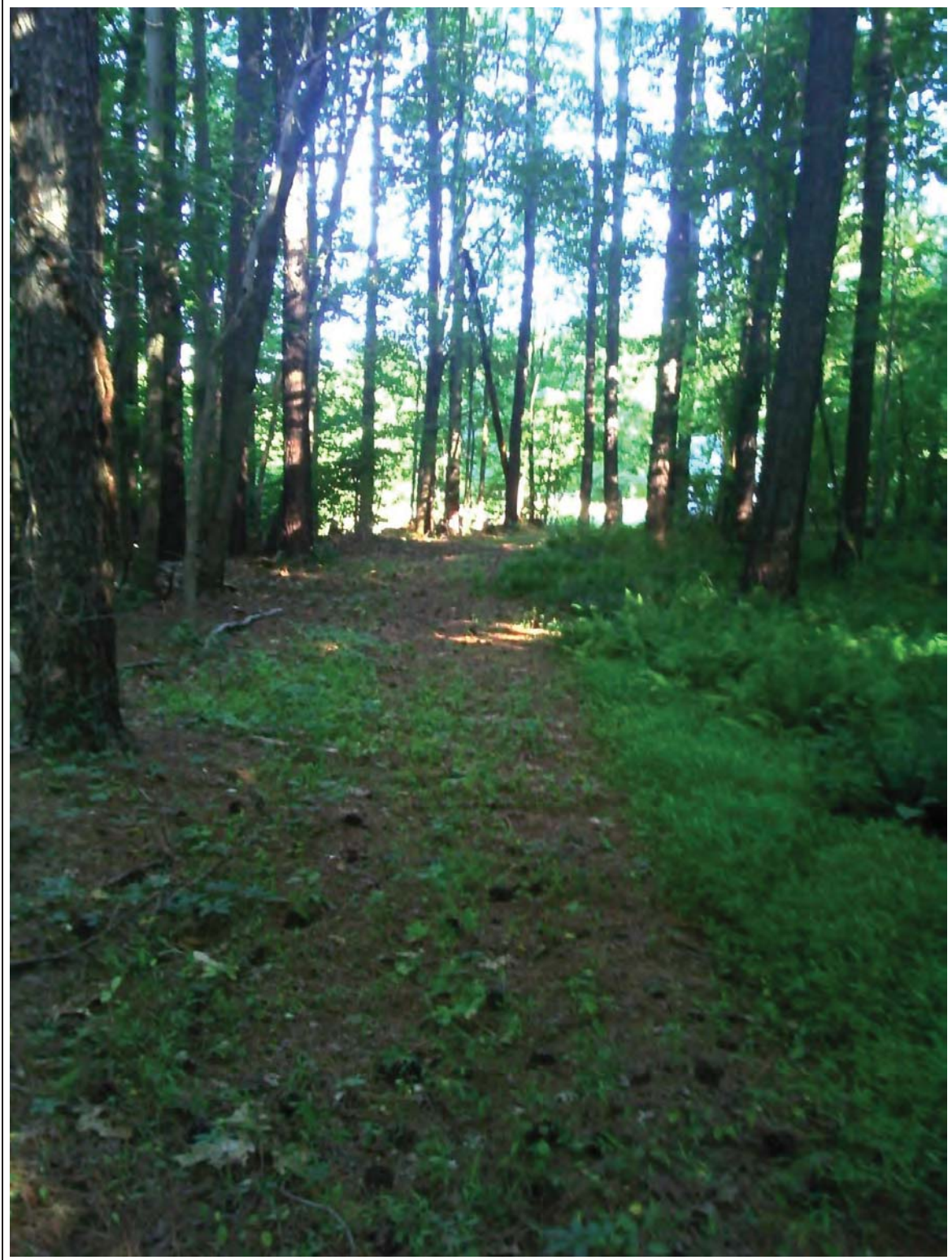


Photo 5-43: Greenbridge East unauthorized trail spur to shoreline

Study Results, Observations, and Recommendations



Photo 5-44: West Big Branch moderate slope

Study Results, Observations, and Recommendations



Photo 5-45: West Big Branch Access Road covered with overgrown vegetation

Study Results, Observations, and Recommendations



Photo 5-46: West Big Branch Access Road vehicle induced rutting

Study Results, Observations, and Recommendations



Photo 5-47: Pig Tail vehicle rutting

Study Results, Observations, and Recommendations



Photo 5-48: Tucker Lane paved road shoulder parking

Study Results, Observations, and Recommendations



Photo 5-49: Tucker Lane access trail

Study Results, Observations, and Recommendations



Photo 5-50: Brown's Bridge at Ednor Road parking Montgomery County side and west of Ednor Road

Study Results, Observations, and Recommendations



Photo 5-51: Brown's Bridge at Ednor Road parking Montgomery County side and east of Ednor Road

Study Results, Observations, and Recommendations



Photo 5-52: Brown's Bridge at Ednor Road parking Montgomery County side and east of Ednor Road

Study Results, Observations, and Recommendations



Photo 5-53: Brogden Road parking area at cul-de-sac used by school buses are turn around

Study Results, Observations, and Recommendations



Photo 5-54: Brogden Road access sign

Study Results, Observations, and Recommendations

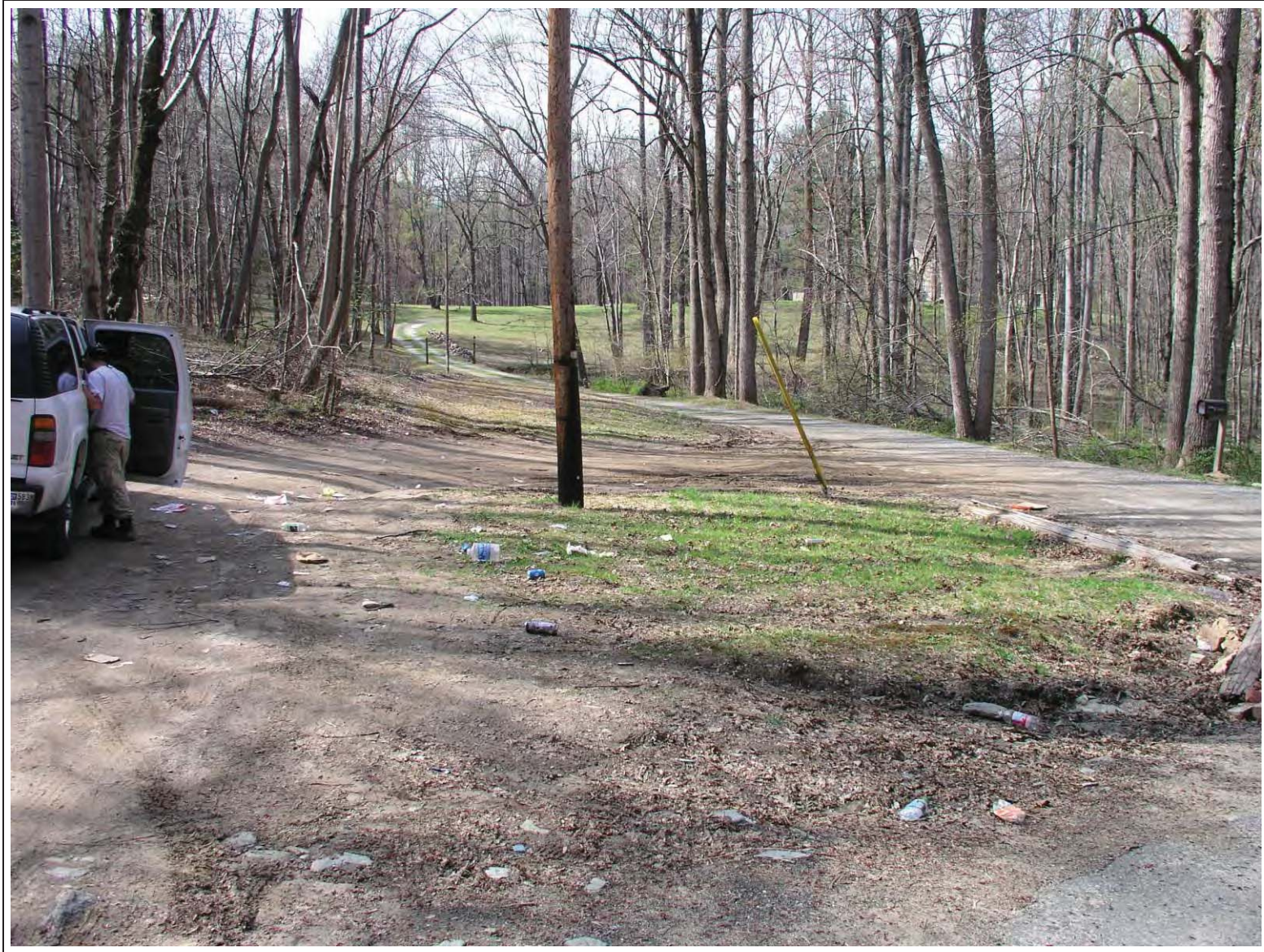


Photo 5-55: Batson Road gravel turnabout off-road parking

Study Results, Observations, and Recommendations



Photo 5-56: Kruhm Road parking

Study Results, Observations, and Recommendations



Photo 5-57: Burtons Lane parking

Study Results, Observations, and Recommendations



Photo 5-58: Supplee Lane picnic area

Study Results, Observations, and Recommendations



Photo 5-59: Suplee Lane Recreation Area boat launch ramp

Study Results, Observations, and Recommendations



Photo 5-60: Suplee Lane Recreation Area parking

Study Results, Observations, and Recommendations



Photo 5-61: Scott's Gove Recreational Area

Study Results, Observations, and Recommendations



Photo 5-62: Brighton Dam paved primary parking lot and welcome center

Study Results, Observations, and Recommendations



Photo 5-63: Brighton Dam paved overflow parking lot

Study Results, Observations, and Recommendations



Photo 5-64: Brighton Dam fenced in picnic area

Study Results, Observations, and Recommendations



Photo 5-65: Brighton Dam outdoor open space

Study Results, Observations, and Recommendations



Photo 5-66: Brighton Dam localized bank erosion due to fishing access to edge of water

Study Results, Observations, and Recommendations



Photo 5-67: Pig Trail Recreational Area

Study Results, Observations, and Recommendations



Photo 5-68: Big Branch Recreational Area outdoor restroom facility

Study Results, Observations, and Recommendations



Photo 5-69: Big Branch Recreational Area boat launch ramp

Study Results, Observations, and Recommendations



Photo 5-70: Big Branch Recreational Area drains toward Triadelphia Reservoir

Study Results, Observations, and Recommendations



Photo 5-71: Triadelphia Recreational Area outdoor restroom facility

Study Results, Observations, and Recommendations



Photo 5-72: Triadelphia Recreational Area boat launch ramp

Study Results, Observations, and Recommendations



Photo 5-73: Triadelphia Recreational Area fishing dock

Study Results, Observations, and Recommendations



Photo 5-74: Triadelphia Recreational Area parking lot

Study Results, Observations, and Recommendations



Photo 5-75: Triadelphia Recreational Area trash receptacles

Study Results, Observations, and Recommendations



Photo 5-76: Greenbridge Recreational Area paved parking and outdoor restroom facility

Study Results, Observations, and Recommendations



Photo 5-77: Greenbridge Recreational Area boat launch ramp

Study Results, Observations, and Recommendations



Photo 5-78: Greenbridge Recreational Area bank erosion with un-stabilized slopes

Study Results, Observations, and Recommendations



Photo 6-1: Apparent Homeless Activity

Study Results, Observations, and Recommendations



Photo 6-2: Example of confusing signage

Study Results, Observations, and Recommendations

Figure 14. Ware River Public Access Signage



Ware River Watershed Public Access Management Plan Update – 2010

Photo6-3: Ware River, Massachusetts, recreational sign

Study Results, Observations, and Recommendations



Photo 6-4: Example of unauthorized private access to WSSC property

Study Results, Observations, and Recommendations



Photo 6-5: Example of unauthorized private access to WSSC property

Study Results, Observations, and Recommendations



Photo 6-6: Horse farm with manure pile.

Study Results, Observations, and Recommendations



Photo 6-7: Horse farm with manure pile.

Study Results, Observations, and Recommendations



Photo 6-8: Example of human modification to WSSC property – horse jump

Study Results, Observations, and Recommendations



Photo 6-9: Example of human modification to WSSC property – horse jump

Study Results, Observations, and Recommendations



Photo 6-10: Example of confusing signage