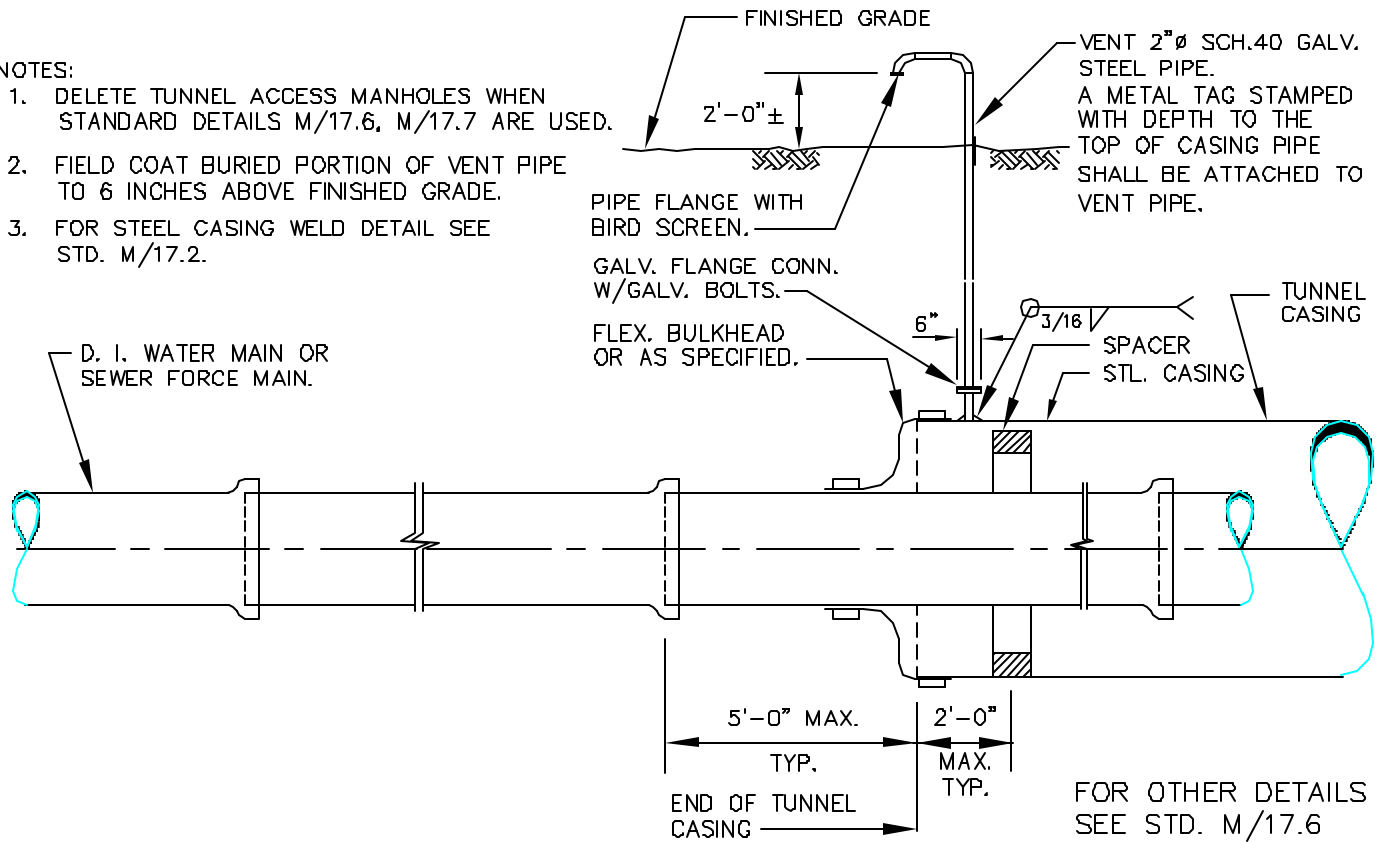
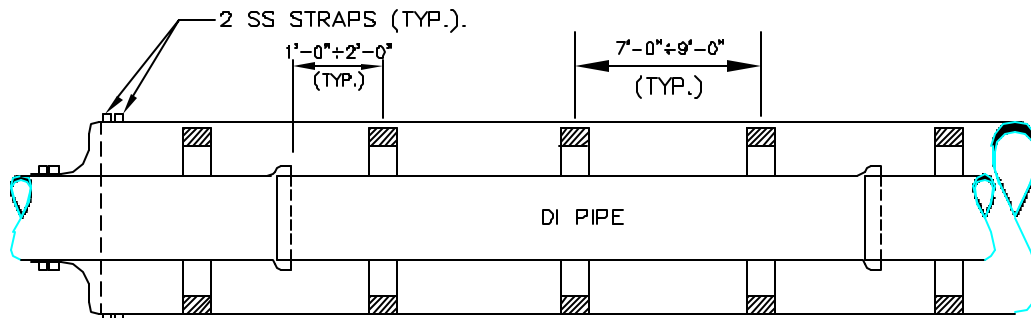


**NOTES:**

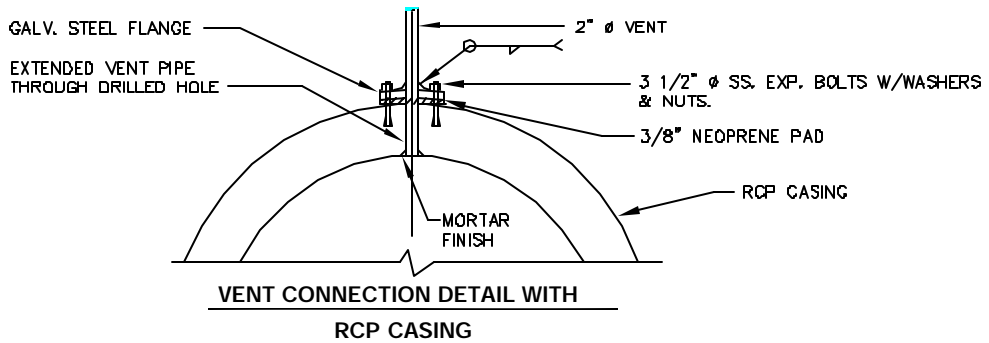
1. DELETE TUNNEL ACCESS MANHOLES WHEN STANDARD DETAILS M/17.6, M/17.7 ARE USED.
2. FIELD COAT BURIED PORTION OF VENT PIPE TO 6 INCHES ABOVE FINISHED GRADE.
3. FOR STEEL CASING WELD DETAIL SEE STD. M/17.2.



**PIPING AT BOTH ENDS OF TUNNEL**



**TYPICAL D.I. PIPE AND SPACER LAYOUT INSIDE TUNNEL**



WASHINGTON  
SUBURBAN  
SANITARY  
COMMISSION

APPROVED: SEP 12 2002  
*Richard R. [Signature]*  
Chief Engineer

STANDARD DETAIL

SPACER SPACING  
AND PIPE LAYOUT AT  
ENDS OF TUNNEL.

M  
17.7