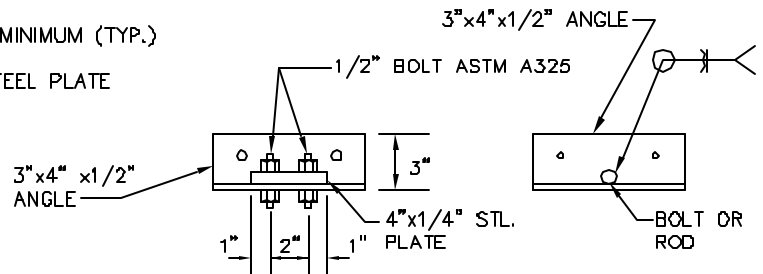


SECTION: RCP SLEEVE- INSTALLED BY OPEN EXCAVATION.



A B
SECTION: RCP INSTALLED BY TUNNELING
 (MAX. DIAMETER OF CASING LIMITED TO 60")

NOTES:

1. FOR OTHER REQUIREMENTS SEE STANDARD M/17.1, M17.2, M/17.3.
2. NO WELDING OR CUTTING WILL BE PERMITTED IN THE FIELD.

WASHINGTON
 SUBURBAN
 SANITARY
 COMMISSION

APPROVED: SEP 12 2002

 Chief Engineer

STANDARD DETAIL
 HOLD DOWN ASSEMBLY
 FOR RCP CASING PIPE

M
 17.4