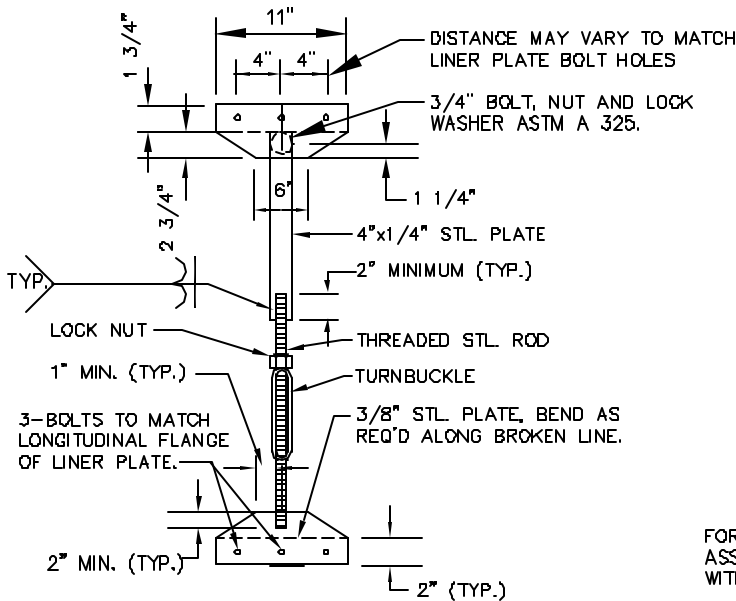
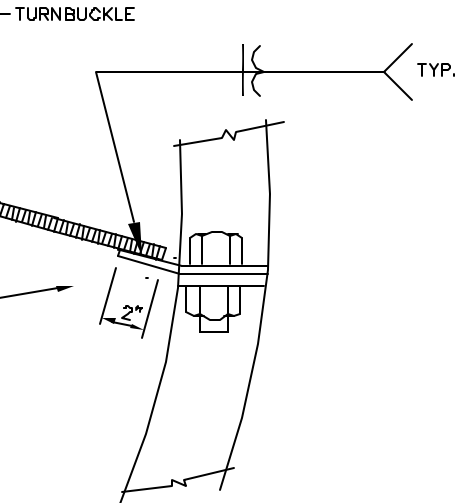


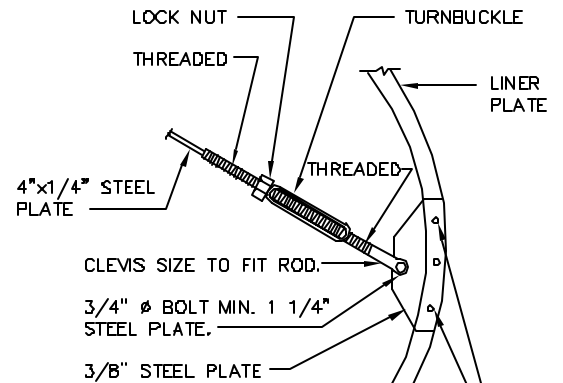
GENERAL NOTES:

1. FOR OTHER REQUIREMENTS SEE M/17.1, M/17.2, AND M/17.4.
2. NO WELDING OR CUTTING WILL BE PERMITTED IN THE FIELD.

DIA. OF PIPE	SIZE		NO. OF ASSEMBLIES PER 18" LONG D.I. PIPE
	TURNBUCKLE	THREADED ROD	
≤ 12"	1/2"	1/2"	1
14 TO 36	3/4"	3/4"	2
42 & 48	1"	1"	2
>48	SPECIAL DESIGN REQUIRED		



STRAP DETAIL FOR CONNECTION TO LONGITUDINAL FLANGE OF LINER PLATES



FOR OTHER SIDE OF HOLD DOWN ASSEMBLY USE THREADED ROD WITHOUT TURNBUCKLE.

2 BOLTS TO MATCH CIRCUMFERENTIAL FLANGE OF LINER PLATE

STRAP DETAIL FOR CONNECTION TO CIRCUMFERENTIAL FLANGE OF LINER PLATES

WASHINGTON
SUBURBAN
SANITARY
COMMISSION

APPROVED: SEP 12 2002

Richard P. Huggins
Chief Engineer

STANDARD DETAIL

HOLD DOWN ASSEMBLY
FOR STEEL LINER PLATE

M
17.3