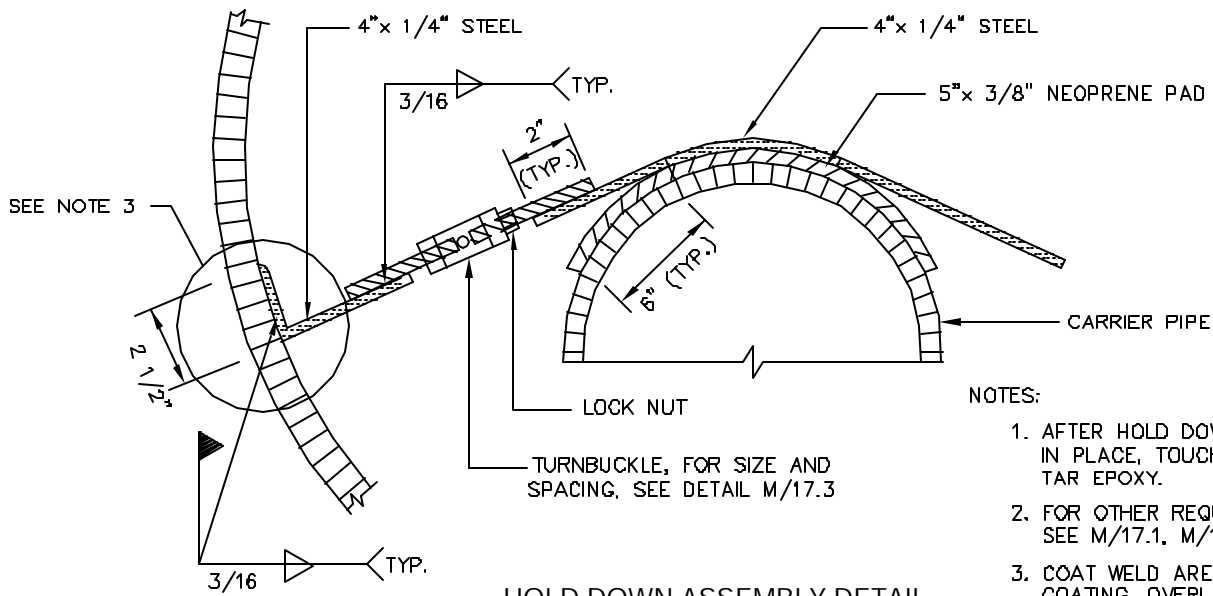


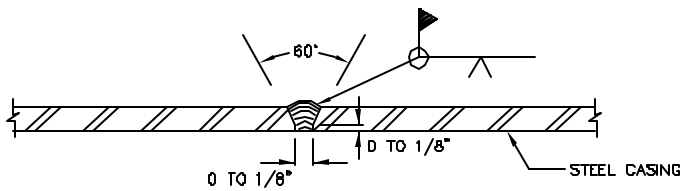
SECTION



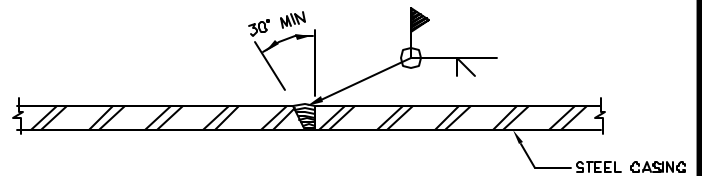
HOLD DOWN ASSEMBLY DETAIL

NOTES:

1. AFTER HOLD DOWN ASSEMBLY IS IN PLACE, TOUCH UP WITH COAL TAR EPOXY.
2. FOR OTHER REQUIREMENTS SEE M/17.1, M/17.3 AND M/17.4.
3. COAT WELD AREA WITH FIELD COATING. OVERLAP FIELD COATING ONTO HOLD DOWN ASSEMBLY AND CASING PIPE A MINIMUM OF 2 INCHES.



OPTION 1



OPTION 2

STEEL CASING WELD DETAIL (TYP.)

WASHINGTON
SUBURBAN
SANITARY
COMMISSION

APPROVED: SEP 12 2002

Rafael Rodriguez
Chief Engineer

STANDARD DETAIL

HOLD DOWN ASSEMBLY
FOR BORE AND JACK
STEEL CASING PIPES

M
17.2