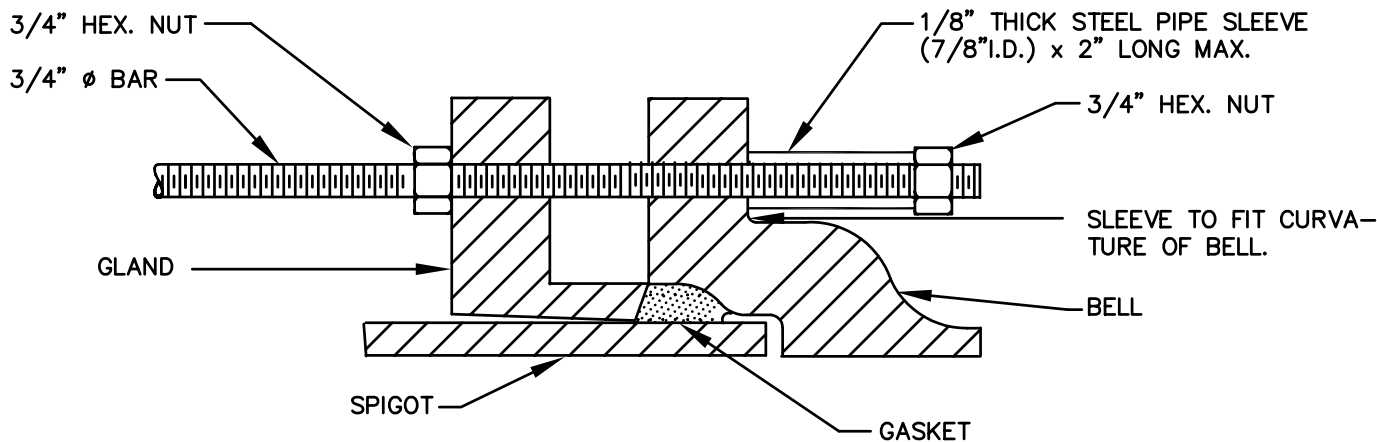


PLAN



CROSS SECTION
SLEEVE AND BAR ASSEMBLY

NOTES:

1. USE DUCTILE IRON MECHANICAL JOINT FITTINGS ONLY.
2. COAT BARS AND APPURTENANCES WITH FIELD-APPLIED COATING, SEE SPECIFICATIONS.
3. IF DISTANCE BETWEEN VALVE AND FIRE HYDRANT IS LONGER THAN 4'-0", SEE DETAIL B/2.1, NOTES 3 AND 4.
4. FOR THE NUMBER OF REQUIRED TIE BOLTS, SEE DETAIL B/2.3.

WASHINGTON
SUBURBAN
SANITARY
COMMISSION

APPROVED: JULY 1, 2005
Paul P. [Signature]
Chief Engineer

STANDARD DETAIL
ALTERNATE METHOD
OF STRAPPING VALVE
TO FIRE HYDRANT WITH
TIE BOLTS

B
2.2a